

McAfee Installation Designer

VERSION 7.0



COPYRIGHT

© 2003 Networks Associates Technology, Inc. All Rights Reserved. No part of this publication may be reproduced, transmitted, transcribed, stored in a retrieval system, or translated into any language in any form or by any means without the written permission of Networks Associates Technology, Inc., or its suppliers or affiliate companies. To obtain this permission, write to the attention of the Network Associates legal department at: 3965 Freedom Circle, Santa Clara, California 95054, or call +1-972-308-9960.

TRADEMARK ATTRIBUTIONS

Active Firewall, Active Security, Active Security (in Katakana), ActiveHelp, ActiveShield, AntiVirus Anyware and design, Bomb Shelter, Certified Network Expert, Clean-Up, CleanUp Wizard, CNX, CNX Certification Certified Network Expert and design, Design (stylized N), Disk Minder, Distributed Sniffer System, Distributed Sniffer System (in Katakana), Dr Solomon's, Dr Solomon's label, Enterprise SecureCast, Enterprise SecureCast (in Katakana), Event Orchestrator, EZ SetUp, First Aid, ForceField, GMT, GroupShield, GroupShield (in Katakana), Guard Dog, HelpDesk, HomeGuard, Hunter, LANGuru, LANGuru (in Katakana), M and design, Magic Solutions, Magic Solutions (in Katakana), Magic University, MagicSpy, MagicTree, McAfee, McAfee (in Katakana), McAfee and design, McAfee.com, MultiMedia Cloaking, Net Tools, Net Tools (in Katakana), NetCrypto, NetScan, NetShield, NetStalker, Network Associates, NetXray, NotesGuard, Nuts & Bolts, Oil Change, PC Medic, PCNotary, PrimeSupport, Recoverkey, Recoverkey – International, Registry Wizard, ReportMagic, Router PM, Safe & Sound, SalesMagic, SecureCast, Service Level Manager, ServiceMagic, SmartDesk, Sniffer, Sniffer (in Hangul), Stalker, SupportMagic, TIS, TMEG, Total Network Security, Total Network Visibility, Total Network Visibility (in Katakana), Total Service Desk, Total Virus Defense, Trusted Mail, UnInstaller, Virex, Virus Forum, ViruScan, VirusScan, WebScan, WebShield, WebShield (in Katakana), WebSniffer, WebStalker, WebWall, Who's Watching Your Network, WinGauge, Your E-Business Defender, ZAC 2000, Zip Manager are registered trademarks of Network Associates, Inc. and/or its affiliates in the US and/or other countries. All other registered and unregistered trademarks in this document are the sole property of their respective owners.

This product includes or may include software developed by the OpenSSL Project for use in the OpenSSL Toolkit. (<http://www.openssl.org/>)

This product includes or may include cryptographic software written by Eric Young. (ey@cryptsoft.com)

LICENSE AGREEMENT

NOTICE TO ALL USERS: CAREFULLY READ THE APPROPRIATE LEGAL AGREEMENT CORRESPONDING TO THE LICENSE YOU PURCHASED, WHICH SETS FORTH THE GENERAL TERMS AND CONDITIONS FOR THE USE OF THE LICENSED SOFTWARE. IF YOU DO NOT KNOW WHICH TYPE OF LICENSE YOU HAVE ACQUIRED, PLEASE CONSULT THE SALES AND OTHER RELATED LICENSE GRANT OR PURCHASE ORDER DOCUMENTS THAT ACCOMPANIES YOUR SOFTWARE PACKAGING OR THAT YOU HAVE RECEIVED SEPARATELY AS PART OF THE PURCHASE (AS A BOOKLET, A FILE ON THE PRODUCT CD, OR A FILE AVAILABLE ON THE WEB SITE FROM WHICH YOU DOWNLOADED THE SOFTWARE PACKAGE). IF YOU DO NOT AGREE TO ALL OF THE TERMS SET FORTH IN THE AGREEMENT, DO NOT INSTALL THE SOFTWARE. IF APPLICABLE, YOU MAY RETURN THE PRODUCT TO NETWORK ASSOCIATES OR THE PLACE OF PURCHASE FOR A FULL REFUND.

Contents

Preface	5
Audience	5
Getting more information	6
Contacting McAfee and Network Associates	7
1 About McAfee Installation Designer	9
Understanding the .MSI file	9
Understanding the .CAB file	10
What's new in this release	11
McAfee AutoUpdate 7.0	11
AutoUpdate repository list	12
Editing already customized installation packages	13
Placing new DAT files and engines in a package	14
Placing HotFixes and Service Packs in a package	14
Adding programs	15
User interface visibility	15
Alert Manager	16
2 Installing and Uninstalling	17
Before you begin	17
System requirements	18
Server requirements	18
Workstation requirements	19
Account	19
Installing McAfee Installation Designer software	19
Removing the Installation Designer	22
3 Installation Packages and Settings Files	23
Using McAfee Installation Designer	23
Starting the Installation Designer	24
Creating a new installation package	25
Setting source and destination folders	26

Setting features	27
Setting the source for configuration	29
Setting installation options	30
Configuring the On-Access Scanner	31
Configuring the On-Delivery Scanner	33
Configuring scheduled scans	35
Adding scheduled scan tasks	35
Editing scheduled scan tasks	38
Deleting scheduled scan tasks	39
Configuring the AutoUpdate schedule	40
Adding an update task	40
Editing an update task	41
Deleting update tasks	42
Adding a mirror task	43
Editing a mirror task	44
Deleting mirror tasks	45
Configuring Alert Manager properties	45
Configuring Alert Manager installation	47
Configuring user interface properties	48
Setting Add/Remove program options	50
For all Windows versions	50
For Windows 2000, Windows XP, and Windows Server 2003	50
Configuring DAT files and engine	51
Using separate .ZIP files	52
Configuring patch files	52
Adding patch files	53
Editing patch files	53
Deleting patch files	53
Configuring AutoUpdate	54
AutoUpdate repository list file	54
Setting programs to run after installation	58
Adding programs to run after installation	58
Editing program entries	59
Deleting program entries	59
Setting additional files to install	59
Adding files to the installation package	60
Editing existing additional files	61
Deleting existing additional files	61

Setting registry settings	62
Setting Installation Designer password	63
Upgrading the license	64
Configuring post-installation options	65
Reviewing and saving your installation configuration	67
Generating a settings file	68
Setting source for configuration	69
Setting destination options	70
Setting configuration type	71
Configuring the On-Access Scanner	72
Configuring On-Delivery Scanner	74
Configuring scheduled scans	76
Adding scheduled scan tasks	77
Editing scheduled scan tasks	78
Deleting scheduled scan tasks	80
Configuring the AutoUpdate Schedule	80
Adding an update task	81
Editing an update task	82
Deleting update tasks	83
Adding a mirror task	83
Editing a mirror task	84
Deleting mirror tasks	85
Configuring Alert Manager properties	86
Configuring user interface properties	88
Setting registry settings	90
Setting Installation Designer password	91
Upgrading the license	92
Reviewing and saving your installation configuration	93
What next?	93
4 The Completed Installation Package and Settings File	95
The completed installation package	95
The completed settings file	96
5 Troubleshooting	97
Frequently asked questions (FAQ)	97
Error Messages	98
Index	103

Preface

This Product Guide introduces McAfee Installation Designer™ software version 7.0, and provides the following information:

- Detailed instructions for installing the software.
- Descriptions of all new features in this release of the software.
- Descriptions of all product features.
- Detailed instructions for using the software to create and configure VirusScan Enterprise installation packages and settings files.
- Procedures for performing tasks.
- Roadmap for getting additional information or help.

Audience

This information is designed for system and network administrators who are responsible for their company's anti-virus program.

Getting more information

Help	Product information in the Help system that is accessed from within the application. The Help system provides high-level and detailed information. Access from either a Help menu option or Help button in the application.
Release Notes	<p><i>README file.</i> Product information, system requirements, resolved issues, any known issues, and last-minute additions or changes to the product or its documentation.</p> <p>Available as a .TXT file from either the product CD or the McAfee download site.</p>
Contact	<p>A list of phone numbers, street addresses, web addresses, and fax numbers for Network Associates offices in the United States and around the world. Also provides contact information for services and resources, including:</p> <ul style="list-style-type: none">■ Technical Support■ Customer Service■ Download Support■ AVERT Anti-Virus Emergency Response Team■ McAfee Beta Site■ On-Site Training■ Network Associates Offices Worldwide

Contacting McAfee and Network Associates

Technical Support	http://knowledge.nai.com
McAfee Beta Site	www.mcafeeb2b.com/beta/
AVERT Anti-Virus Emergency Response Team	www.mcafeeb2b.com/naicommon/avert/default.asp
Download Site	www.mcafeeb2b.com/naicommon/download/
DAT File Updates	www.mcafeeb2b.com/naicommon/download/dats/find.asp
Product Upgrades	www.mcafeeb2b.com/naicommon/download/upgrade/login.asp Valid grant number required. Contact Network Associates Customer Service.
On-Site Training	www.mcafeeb2b.com/services/mcafee-training/default.asp
Network Associates Customer Service:	
E-mail	services_corporate_division@nai.com
Web	www.nai.com www.mcafeeb2b.com
US, Canada, and Latin America toll-free:	
Phone	+1-888-VIRUS NO or +1-888-847-8766 Monday – Friday, 8 a.m. – 8 p.m., Central Time

For additional information on contacting Network Associates and McAfee — including toll-free numbers for other geographic areas — see the Contact file that accompanies this product release.

About McAfee Installation Designer

1

The McAfee Installation Designer software allows an administrator to preconfigure a VirusScan Enterprise software package for installation on another computer. This allows you to configure the product for groups of computers all at once. Using a graphical interface, the utility allows you to:

- Pre-set any install-time options for VirusScan Enterprise.
- Select additional files to copy onto the system during installation.
- Set registry keys in addition to those set by the installation.
- Install the most current DAT and engine files other than those that shipped with the product.
- Modify the configuration of previous VirusScan Enterprise deployments.

Understanding the .MSI file

The McAfee Installation Designer relies on an installation package that includes an .MSI file. An .MSI file is a Microsoft Windows Installer package that includes installation and configuration instructions for the software being deployed. The original .MSI file that came with your McAfee anti-virus product contains the instructions for enabling the software's default configuration. It serves as the template for creating a new customized .MSI file that contains customization and configuration instructions. The newly created .MSI file can then be deployed to computers on your network to serve as the template for additional .MSI files, customized program defaults or options. You can then deploy these new .MSI files generally or selectively.

Because the original .MSI file is the basis for all subsequent .MSI files, it is essential that you know how to locate the one that was included with your anti-virus software package. You can usually find the .MSI file in the folder where you first extracted the contents of the .ZIP file that contained the anti-virus program, or on the product CD. The name of the .MSI file for VirusScan Enterprise 7.0 is VSE700.MSI. If you have difficulty locating the file, use the **Find** command on the **Start** menu to search for it.

Understanding the .CAB file

The McAfee Installation Designer also relies on the creation and modification of a settings (.CAB) file located in the installation package. This file controls specific VirusScan Enterprise non-installation configuration settings that are deployed with an installation package that you create with the McAfee Installation Designer 7.0. This file contains settings for:

- On-Access Scanner
- On-Delivery Scanner
- Scheduled on-demand scans
- AutoUpdate
- Alert Manager
- User interface options
- Registry settings
- Installation Designer password
- Upgrade License

There is no .CAB file in the original installation package. It is created by the McAfee Installation Designer when you customize an installation package. You can create a new .CAB file, or modify an existing .CAB file from another custom installation package.

If you modify an existing installation by generating a .CAB file, you are prompted to choose one of the following:

- The settings of the VirusScan Enterprise installed currently on the local system as a basis for the .CAB file.
- A specific existing .CAB file that has already been created or modified with the Installation Designer.
- None. This choice allows you to import an AutoUpdate repository list, configure the registry settings, set an Installation Designer password, and upgrade the license only.

What's new in this release

This release of McAfee Installation Designer supports VirusScan Enterprise 7.0 software and introduces the following new features:

- [McAfee AutoUpdate 7.0 on page 11](#)
- [AutoUpdate repository list on page 12](#)
- [Editing already customized installation packages on page 13](#)
- [Placing new DAT files and engines in a package on page 14](#)
- [Placing HotFixes and Service Packs in a package on page 14](#)
- [Adding programs on page 15](#)
- [User interface visibility on page 15](#)
- [Alert Manager on page 16](#)

McAfee AutoUpdate 7.0

Previous release	This functionality was not available in previous versions of Installation Designer.
Current release	McAfee Installation Designer 7.0 can replace the AutoUpdate version originally in the source VirusScan Enterprise package, allowing you to deploy both at the same time. You do not need to deploy VirusScan Enterprise, and then deploy AutoUpdate.
Benefits	<ul style="list-style-type: none">■ More efficient deployment.■ Greater control of installation configurations.
Where to find	The AutoUpdate Configuration dialog box of the Installation Designer wizard.
For more information	See Configuring AutoUpdate on page 54 .

AutoUpdate repository list

- Previous release** This functionality was not available in previous versions of Installation Designer.
- Current release** The McAfee Installation Designer 7.0 allows you to import and edit an AutoUpdate repository list (SITELIST.XML) file into the VirusScan Enterprise package for deployment. This file contains a list of McAfee AutoUpdate Architect repositories from which AutoUpdate 7.0 can retrieve updates for the client computers.
- Benefits**
- More efficient deployment.
 - Greater control of installation configurations.
- Where to find** The **AutoUpdate Configuration** dialog box of the **McAfee Installation Designer** wizard.
- For more information** See [Configuring AutoUpdate on page 54](#).

Editing already customized installation packages

- Previous release** This functionality was not available in previous versions of Installation Designer.
- Current release** Installation Designer 7.0 allows you to edit an already customized installation package.
- If you are creating a customized installation package with Installation Designer that is similar to a customized package you already created, you can use the existing customized package as a template.
- Benefits**
- More efficient deployment.
 - Greater control of installation configurations.
- Where to find** The **Welcome** dialog box of the **McAfee Installation Designer** wizard.
- For more information** See [Creating a new installation package on page 25](#).

Placing new DAT files and engines in a package

- Previous release** This functionality was not available in previous versions of Installation Designer.
- Current release** Installation Designer 7.0 allows you to more easily incorporate new DAT and engine files into an installation package.
- Benefits**
- More efficient deployment.
 - Greater control of installation configurations.
- Where to find** The **DAT and Engine Files** dialog box of the **McAfee Installation Designer** wizard.
- For more information** See [Configuring DAT files and engine on page 51](#).

Placing HotFixes and Service Packs in a package

- Previous release** This functionality was not available in previous versions of Installation Designer.
- Current release** Installation Designer 7.0 allows you to include HotFixes and Service Packs in an installation package.
- Benefits**
- More efficient deployment.
 - Greater control of installation configurations.
- Where to find** The **Patch Files** dialog box of the **McAfee Installation Designer** wizard.
- For more information** See [Configuring patch files on page 52](#).

Adding programs

- Previous release** You could add one additional executable only to the package.
- Current release** Installation Designer 7.0 allows you to add up to 100 additional program executables to deploy and install with VirusScan Enterprise.
- Benefits**
- More efficient deployment.
- Where to find** The **Programs** dialog box of the **McAfee Installation Designer** wizard.
- For more information** See [Setting programs to run after installation on page 58](#).

User interface visibility

- Previous release** This functionality was not available in previous versions of Installation Designer.
- Current release** Installation Designer 7.0 allows you to configure the VirusScan Enterprise installation to hide elements of the interface to the end user once installed.
- Benefits**
- More consistent security across the network.
 - Greater control of installation configurations.
- Where to find** The **User Interface Options** dialog box of the **McAfee Installation Designer** wizard.
- For more information** See [Configuring user interface properties on page 88](#).

Alert Manager

- Previous release** This functionality was not available in previous versions of Installation Designer.
- Current release** Installation Designer 7.0 allows you to include and configure Alert Manager™ in an installation package.
- Benefits**
- More efficient use of time.
 - Greater control of installation configurations.
- Where to find** The **Alert Manager Installation** and the **Alert Manager Properties** dialog boxes of the **McAfee Installation Designer** wizard.
- For more information** See [Configuring Alert Manager properties on page 45](#) and [Configuring Alert Manager installation on page 47](#).

This section provides instructions to install and remove McAfee Installation Designer software. This section contains the following topics:

- [Before you begin on page 17](#)
- [Installing McAfee Installation Designer software on page 19](#)
- [Removing the Installation Designer on page 22](#)

Before you begin

McAfee distributes Installation Designer software in two ways:

- As an archive file that you can download from the McAfee web site.
- On the VirusScan Enterprise product CD.

To install Installation Designer, you must have administrator rights for the computer where you plan to install the program.

You must have VirusScan Enterprise 7.0 installed to configure all settings with the McAfee Installation Designer. If you are upgrading from a previous version of VirusScan or NetShield software, you will be prompted to remove it, and have the option to preserve settings from the previously installed version.

Review the system requirements to verify that the program can run on your system, then follow the installation steps that start on [page 19](#).

System requirements

Ensure that your computer meets the following system requirements before you start the installation process.

Server requirements

The Installation Designer software installs and runs on a server equipped with:

- An Intel processor or compatible architecture. McAfee recommends an Intel Pentium or Celeron processor running a minimum of 166mhz.
- A CD-ROM drive or an Internet connection.
- Microsoft Internet Explorer 5.0 or later.
- Any of the following Microsoft Windows platforms:
 - ◆ Windows NT 4.0 Server, Service Pack 4, Service Pack 5, Service Pack 6 / Service Pack 6a
 - ◆ Windows NT 4.0 Enterprise Server, SP4, SP5, SP6/SP6a
 - ◆ Windows 2000 Server, SP1, SP2, SP3
 - ◆ Windows 2000 Advanced Server, SP1, SP2, SP3
 - ◆ Windows 2000 DataCenter Server, SP1, SP2, SP3
 - ◆ Windows Server 2003 Standard (formerly known as Windows .NET Standard Server)
 - ◆ Windows Server 2003 Enterprise (formerly known as Windows .NET Enterprise Server)
 - ◆ Windows Server 2003 Web (formerly known as Windows .NET Web Server)
- Adequate hard disk space as follows:
 - ◆ **15MB** — If you perform a complete installation of McAfee Installation Designer.
 - ◆ **25MB** — Configure an unmodified VirusScan Enterprise installation package.
 - ◆ **35MB** — Configure an unmodified VirusScan Enterprise installation package and Alert Manager.

Workstation requirements

The Installation Designer software installs and runs on a workstation equipped with:

- An Intel processor or compatible architecture. McAfee recommends an Intel Pentium or Celeron processor running a minimum of 166mhz.
- A CD-ROM drive or an Internet connection.
- Microsoft Internet Explorer 5.0 or later.
- Any of the following Microsoft Windows platforms:
 - ◆ Windows NT 4.0, SP4, SP5, SP6a
 - ◆ Windows 2000 Professional, SP1, SP2, SP3
 - ◆ Windows XP Home Professional, SP1
- Adequate hard disk space as follows:
 - ◆ **15MB** — If you perform a complete installation of McAfee Installation Designer.
 - ◆ **25MB** — Configure an unmodified VirusScan Enterprise installation package.
 - ◆ **35MB** — Configure an unmodified VirusScan Enterprise installation package and Alert Manager.

Account

The user installing the Installation Designer must be using an account with administrator rights. This can be any account located within the Administrators group.

Installing McAfee Installation Designer software

SETUP.EXE is the program that places the executable file for the Installation Designer on your computer's hard drive.

To install the software:

- 1 Extract the contents of MID700.ZIP in one of the following ways:
 - ◆ From the VirusScan Enterprise 7.0 CD to the desired location on your computer.
 - ◆ From the McAfee web site, download MID700.ZIP to a temporary location, then extract the contents to the desired location.

- 2 Double-click SETUP.EXE.
 - ◆ If Setup detects a previously installed version of the software, the first dialog box is **Remove the Program**. Click **Remove**, then **Finish**, then double-click SETUP.EXE again.
 - ◆ If you are installing the software for the first time on a server, the first dialog box displays an important notice about the README.TXT file. Read this notice, then open and read the README.TXT file before installing the software. You can access this document again after installation, by opening the README.TXT file located in the program's installation folder.
- 3 Click **Next** to continue. The end-user license agreement appears.

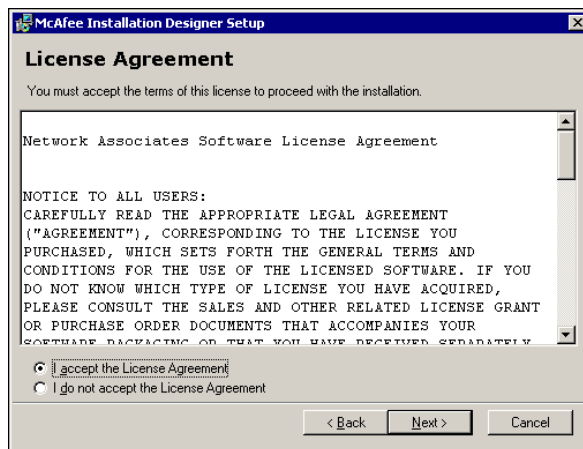


Figure 2-1. License Agreement

Read the agreement carefully. If you install the software, you agree to abide by the terms of the license.

- 4 Select **I accept the License Agreement**, and click **Next** to continue.

NOTE

If you do not agree to the license terms, click **Cancel** to exit the Setup wizard.

- 5 The **Select Installation Folder** dialog box appears, which displays the default location on your hard drive for installing the product.

- 6 Specify the installation location in one of two ways:
 - ◆ Accept the default installation location at:


```
<DRIVE>:\PROGRAM FILES\NETWORK ASSOCIATES\INSTALLATION DESIGNER
```
 - ◆ Click **Browse** and select or create a location for the installation, then click **OK** and return to the **Select Installation Folder** dialog box.
- 7 Click **Disk Usage** to verify that the installation location has adequate available space.

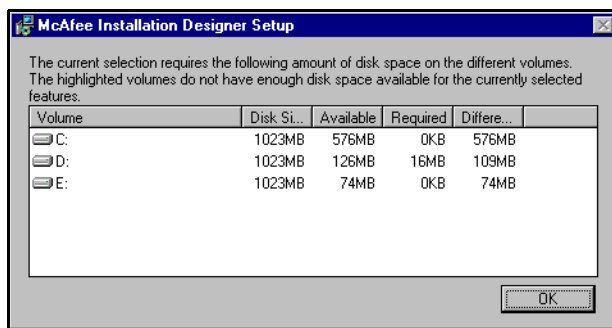


Figure 2-2. McAfee Installation Designer Setup — Disk Usage

- 8 Click **OK** to return to the **Select Installation Folder** dialog box.
- 9 Click **Next** to continue. The **Ready to Install** dialog box appears.
- 10 Click **Next** to continue. The **Installing McAfee Installation Designer** dialog box appears, showing the progress of the installation.

When installation is complete, the final installation dialog box appears.
- 11 Click **Finish**.

NOTE

The computer may require a reboot the installation to complete.

Removing the Installation Designer

To remove the Installation Designer from your hard drive, follow these steps:

- 1 From the **Start** menu, open the **Control Panel** (this varies depending on your operating system), then select **Add/Remove Programs**.
- 2 Select **McAfee Installation Designer** from the list of installed programs, then click **Add/Remove** or **Remove** (depending on your operating system).

Depending on your operating system, the program removal begins, or the **Remove the Program** dialog box may appear.

- 3 Click **Remove**. A progress dialog box appears, and you are prompted when the removal is complete.
- 4 Click **Finish**.

This section provides information on creating custom installation packages for VirusScan Enterprise 7.0, and includes the following topics:

- [Using McAfee Installation Designer on page 23](#)
- [Creating a new installation package on page 25](#)
- [Generating a settings file on page 68](#)
- [What next? on page 93](#)

Before you begin, make sure that you have the following installed on the computer where you are running McAfee Installation Designer:

- VirusScan Enterprise 7.0.
- Alert Manager Server (only if you want to configure and include this in an installation package or settings file).

If you do not have these products installed, you cannot configure their settings.

Using McAfee Installation Designer

McAfee Installation Designer software allows administrators to create a custom VirusScan Enterprise installation package for later installation on another computer. The information that defines the installation is located in the .MSI file. (For details, see [Understanding the .MSI file on page 9](#).)

NOTE

You cannot run McAfee Installation Designer while using an account without administrator rights.

Starting the Installation Designer

To start the Installation Designer from the Windows Desktop, select **Start | Programs | Network Associates | Installation Designer**. The **Welcome** dialog box appears.

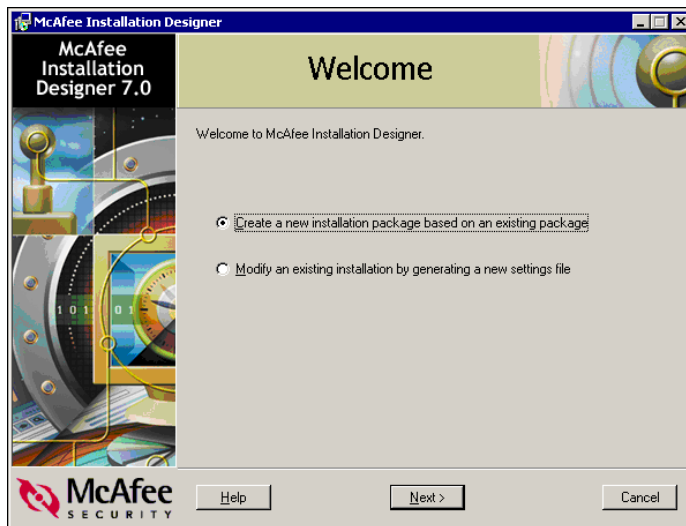


Figure 3-1. Welcome

The Installation Designer provides two options:

- **Create a new installation package based on an existing package**
If you want to create an installation package similar to an existing package, McAfee Installation Designer allows you to copy an existing package (or modify the default VirusScan Enterprise package). In doing this, you need only modify the settings you want to be different, rather than having to configure all settings. When finished, you can save the new installation package in a new location. To proceed, see [Creating a new installation package on page 25](#).
- **Modify an existing installation by generating a new settings file**
If you have already deployed VirusScan Enterprise to a group of destination computers, and would like to modify their configuration, you can generate a new settings (.CAB) file to deploy new configurations to the group. Selecting this option allows you to create a new settings file to deploy to the existing installations. This saves you time by setting and configuring fewer options. When you select this option, notice the reduced set of options in the navigation pane of the Installation Designer. To proceed, see [Generating a settings file on page 68](#).

Creating a new installation package

When you select **Create a new installation package based on an existing package**, the following items appear in the navigation pane of McAfee Installation Designer:

- **Source and Destination**
- **Features**
- **Source for Configuration**
- **Installation Options**
- **On-Access Scanner**
- **On-Delivery Scanner**
- **Scheduled Scans**
- **AutoUpdate Schedule**
- **Alert Manager Properties**
- **Alert Manager Installation**
- **User Interface Properties**
- **Add/Remove Options**
- **DAT and Engine Files**
- **Patch Files**
- **AutoUpdate Configuration**
- **Programs**
- **Additional Files**
- **Registry Settings**
- **Installation Designer Password**
- **Upgrade License**
- **Post-Installation Options**
- **Finish**

To use an existing installation package as a basis for a new package:

- 1 From the **Welcome** dialog box, select **Create a new installation package based on an existing package**.
- 2 Click **Next**. The **Source and Destination** dialog box appears, with a list of all configurable components in the navigation pane.

NOTE

You can select any item in the navigation pane to configure, or you can complete the options in each dialog box, then click **Next** to advance to the next item in the list.

Setting source and destination folders

If you are modifying an existing installation package, the **McAfee Installation Designer** wizard asks you to specify both the source folder that contains the existing VirusScan Enterprise 7.0 installation package you wish to modify, and the destination folder where the new installation package should be saved.

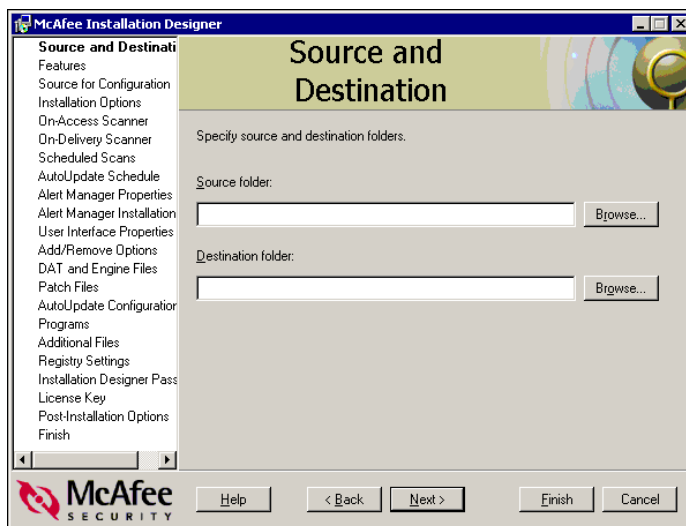


Figure 3-2. Source and Destination

To enter the source and destination folders:

- 1 Specify the path to the source folder containing the existing installation package that you want to modify.
- 2 Specify the path to the destination folder to which the Installation Designer saves the new package file.

NOTE

The source and destination folders must be different locations.

- 3 Click **Next** or use the navigation pane to save the configurations and continue setting other installation package features.

Setting features

The features of the VirusScan Enterprise program appear, each represented by an icon in a tree diagram.

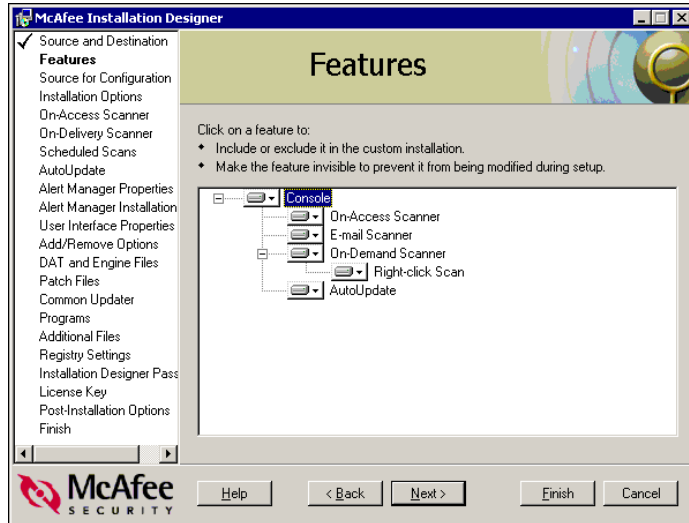


Figure 3-3. Features

To include all the default features in the installation package, click **Next**.

To customize the installation:

- 1 Select the desired feature to display an options menu.

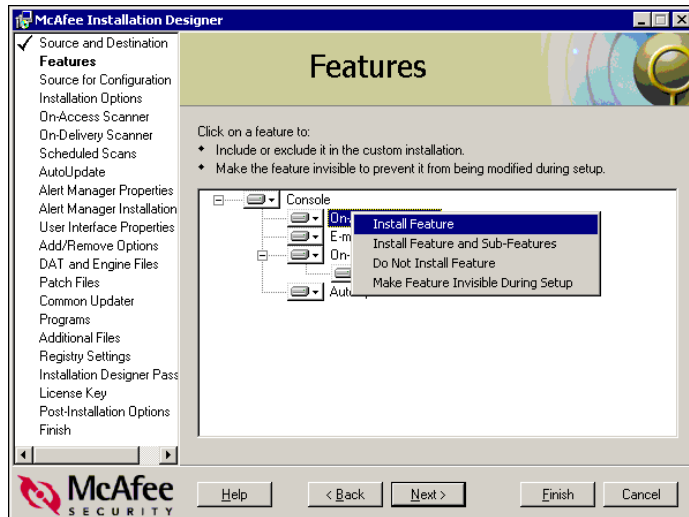


Figure 3-4. Features options menu

- 2 Use these menu options to include or exclude specific features in the installation:
 - ◆ **Install Feature**
Includes the selected feature in the installation package.
 - ◆ **Install Feature and Sub-Features**
Includes the selected feature and its sub-features in the installation package.
 - ◆ **Do Not Install Feature**
Excludes the selected feature and its sub-features from the installation package.
 - ◆ **Make Feature Invisible During Setup**
Includes the selected feature in the package, but does not allow the end user to see it during installation. This is useful when the administrator does not want users to know that a particular feature of the software program exists, or is available for selection. If a feature is set to invisible, it appears in this dialog box with the label: **<<Not Visible>>**.
- NOTE**
You cannot make all features invisible. At least one feature (**Console**) must remain visible for the installation to proceed.
- 3 Click **Next** or use the navigation pane to save the configurations and continue.

Setting the source for configuration

Identify the source for configuration to be used for the settings file.

NOTE

If the source is an already modified package that was created by McAfee Installation Designer, **Settings from the source installation package** is enabled, because this type of source contains the McAfee Installation Designer generated settings file.

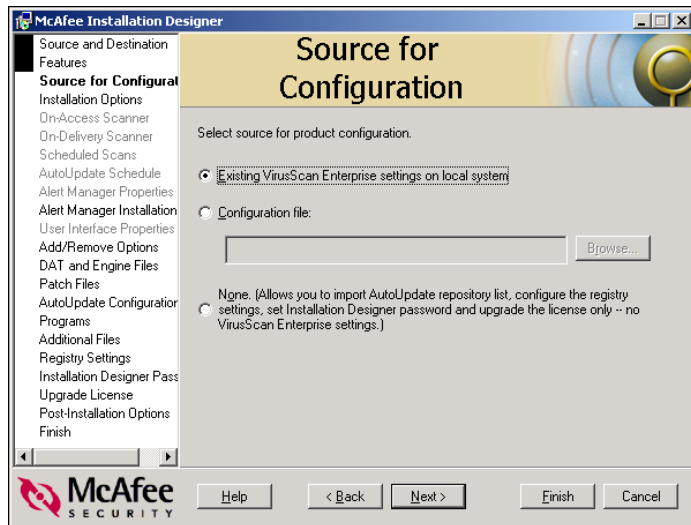


Figure 3-5. Source for Configuration

- 1 Select the source for the configuration settings:
 - ◆ **Existing VirusScan Enterprise settings on local system**
Select this option to use the configuration settings from the VirusScan Enterprise installation on the system where you are running McAfee Installation Designer.

NOTE

If you select this option, the package being modified must be in the same language as the VirusScan Enterprise version on the local system.

- ◆ **Configuration file**
Select this option to use the configuration settings from an existing configuration file. If you select this option, you must browse to the desired settings (.CAB) file.

- ◆ **None.** (Allows you to configure the registry settings, Installation Designer password, and the license key only -- no VirusScan Enterprise settings.)

Select this option if you wish only to configure the registry settings, Installation Designer password, or the license key. This allows you to create a much smaller package.

- 2 Click **Next** or use the navigation pane to save the configurations and continue.

Setting installation options

Use the **Installation Options** dialog box to set the installation options that define how the product installs on the destination computer:

- 1 Choose whether to use the default VirusScan Enterprise installation folder, or to specify a custom installation folder.

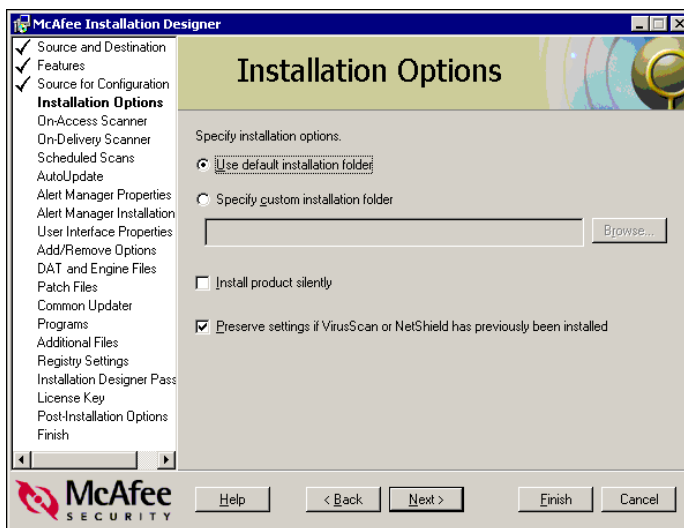


Figure 3-6. Installation Options

- 2 Select **Install product silently** if you want VirusScan Enterprise to install on the destination computer without being visible to the end user.
- 3 Select **Preserve settings if VirusScan or NetShield has previously been installed** to use the settings of a previous installation.
- 4 Click **Next** or use navigation pane to save the configurations and continue.

Configuring the On-Access Scanner

Configure these options to specify how on-access scanning functions once the package is installed on the client computer.

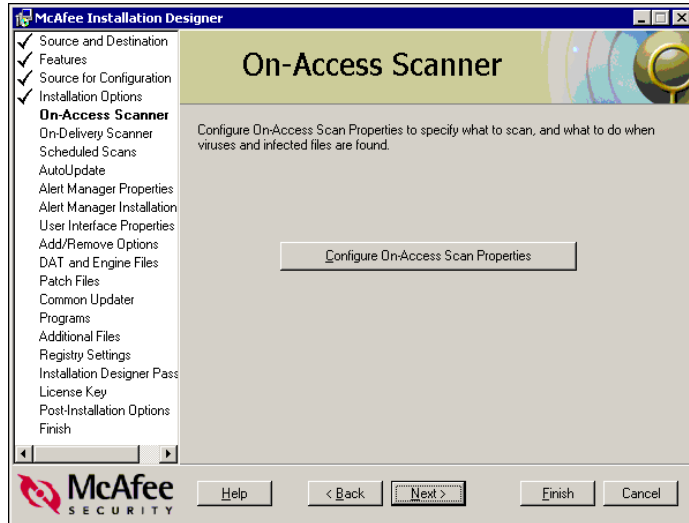


Figure 3-7. On-Access Scanner

To configure on-access scanning:

- 1 From the **On-Access Scanner** dialog box, click **Configure On-Access Scan Properties**. The **VirusScan On-Access Scan Properties** dialog box from the VirusScan Console appears.

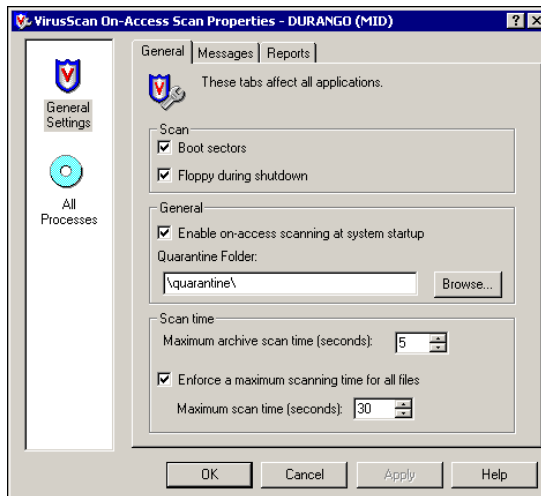


Figure 3-8. VirusScan On-Access Scan Properties

The title bar includes **(MID)** to identify that the dialog box is being accessed via the McAfee Installation Designer, and not directly through VirusScan Enterprise.

- 2 Use the options on these tabs (for each of the items in the list view) to configure the on-access scanner. For more information about these options, see the *VirusScan Enterprise 7.0 Product Guide*.
- 3 Click **OK** to return to the **McAfee Installation Designer** wizard.
- 4 Click **Next** or use the navigation pane to save the configurations and continue.

Configuring the On-Delivery Scanner

Configure these options to specify how e-mail scanning functions once the package is installed on the client computer.

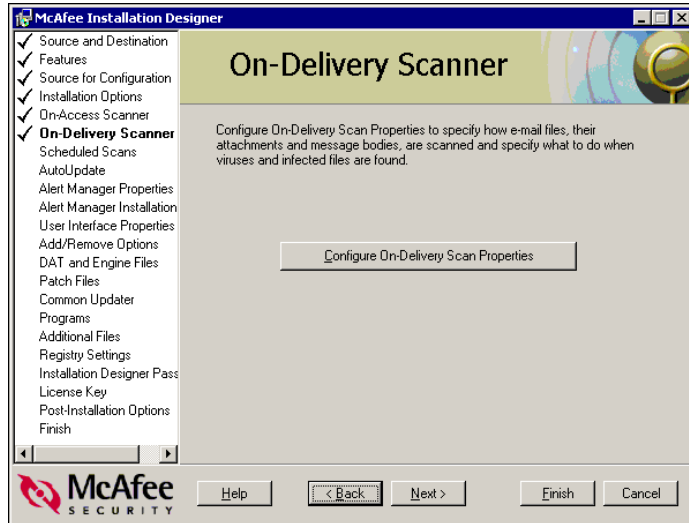


Figure 3-9. On-Delivery Scanner

To configure the On-Delivery Scanner:

- 1 From the **On-Delivery Scanner** dialog box, click **Configure On-Delivery Scan Properties**. The **On Delivery Scan Properties** dialog box from the VirusScan Console appears.

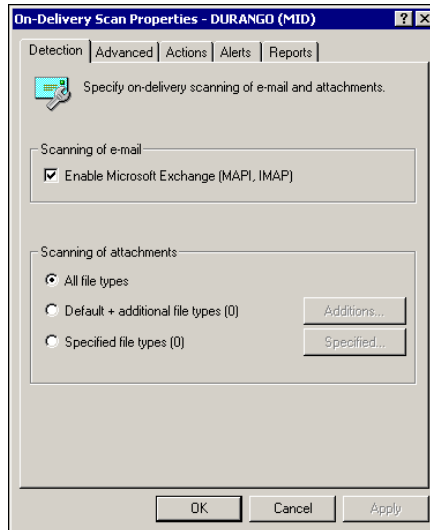


Figure 3-10. On-Delivery Scan Properties

The title bar includes **(MID)** to identify that the dialog box is being accessed via the McAfee Installation Designer, and not directly through VirusScan Enterprise.

- 2 Use the options on these tabs to configure the e-mail scan settings. For more information, see the *VirusScan Enterprise 7.0 Product Guide*.
- 3 Click **OK**.
- 4 Click **Next** or use the navigation pane to save the configurations and continue.

Configuring scheduled scans

Configure these options to set and specify scheduled scans to run on the destination computers once the package is installed.

From the **Scheduled Scans** dialog box, you can:

- Add a new scheduled scan task.
- Edit existing scheduled scan tasks.
- Delete existing scheduled scan tasks.

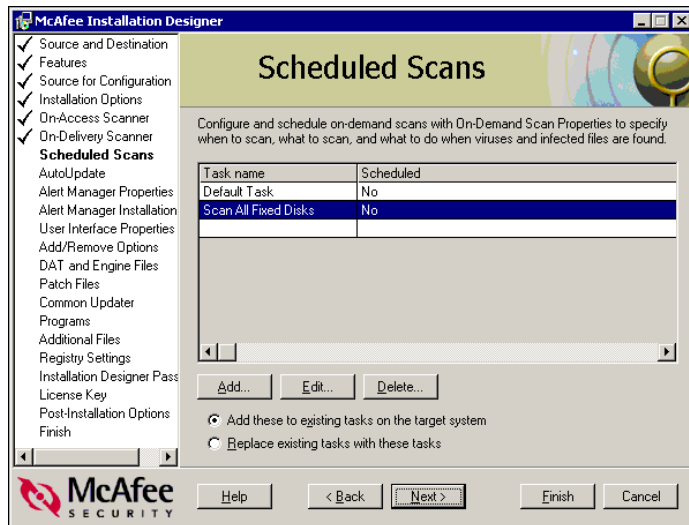


Figure 3-11. Scheduled Scans

Adding scheduled scan tasks

To add a scheduled scan:

- 1 Click **Add**. The **Add On-Demand Scan Task** dialog box appears.

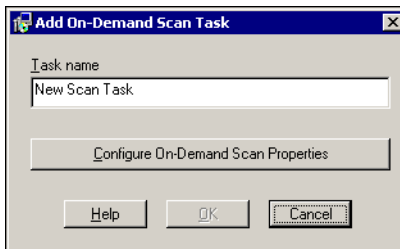


Figure 3-12. Add On-Demand Scan Task

- 2 Name the task in the **Task name** box.

NOTE

The **OK** button is not enabled until after you configure and schedule the scan task.

- 3 Click **Configure On-Demand Scan Properties**. The **VirusScan On-Demand Scan Properties** dialog box appears.

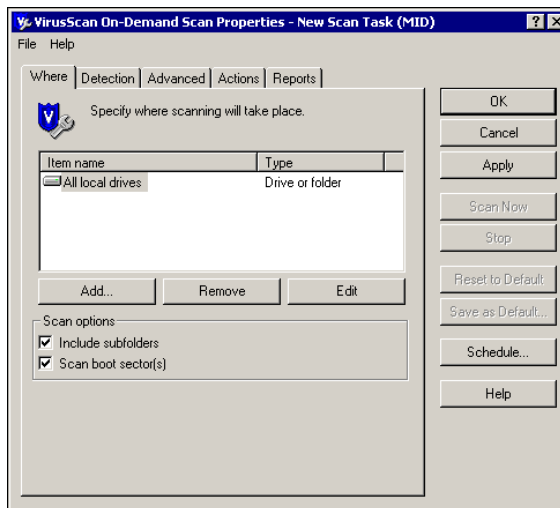


Figure 3-13. VirusScan On-Demand Scan Properties

The title bar includes **(MID)** to identify that the dialog box is being accessed via the McAfee Installation Designer, and not directly through VirusScan Enterprise.

- 4 Use the options on this dialog box to configure and schedule the scan task. For information about these options, see the *VirusScan Enterprise 7.0 Product Guide*.
- 5 When finished configuring and scheduling the task, click **OK** to return to the **Add Scheduled Scan Task** dialog box.
- 6 Click **OK** to save the scan task and return to the **McAfee Installation Designer** wizard.
- 7 When finished configuring scheduled scan tasks, choose whether to add this list of tasks to the existing tasks on the destination computer, or to replace the existing tasks.
- 8 When you complete adding, editing and deleting tasks, click **Next** or use the navigation pane to save the configurations and continue.

Editing scheduled scan tasks

To edit a scheduled scan:

- 1 Select the desired scheduled scan task in the **Scheduled Scans** dialog box, then click **Edit**. The **Edit On-Demand Scan Task** dialog box appears.

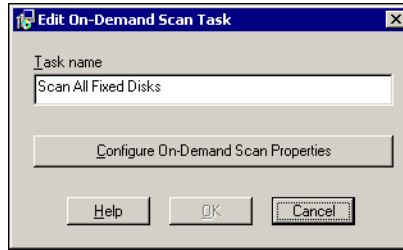


Figure 3-14. Edit On-Demand Scan Task

- 2 Edit the task name, if desired, then click **Configure On-Demand Scan Properties**. The **VirusScan On-Demand Scan Properties** dialog box appears.

NOTE

The **OK** button is not enabled until after you configure, schedule, or rename the scan task.

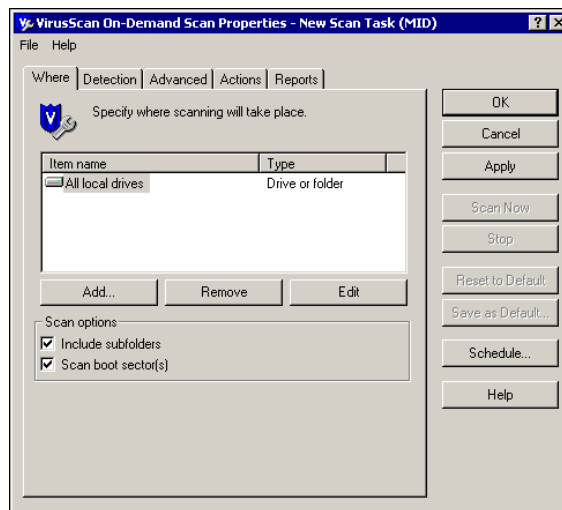


Figure 3-15. VirusScan On-Demand Scan Properties

The title bar includes **(MID)** to identify that the dialog box is being accessed via the McAfee Installation Designer, and not directly through VirusScan Enterprise.

- 3 Use the options on this dialog box to configure and schedule the scan task. For information about these options, see the *VirusScan Enterprise 7.0 Product Guide*.
- 4 When finished configuring and scheduling the task, click **OK** to return to the **Edit On-Demand Scan Task** dialog box.
- 5 Click **OK** to save the scan task and return to the **McAfee Installation Designer** wizard.
- 6 When you complete configuring scheduled scan tasks, choose whether to add this list of tasks to the existing tasks on the destination system, or to replace the existing tasks.
- 7 When you complete adding, editing, and deleting tasks, click **Next** or use the navigation pane to save the configurations and continue.

Deleting scheduled scan tasks

To delete a scheduled scan:

- 1 Select the desired scheduled scan task in the **Scheduled Scans** dialog box, then click **Delete**.
- 2 Click **Yes** when prompted to verify that you want to delete the task.
- 3 When finished configuring the scheduled scan tasks, choose whether to add this list of tasks to the existing tasks on the destination system, or to replace the existing tasks.
- 4 When you complete adding, editing, and deleting tasks, click **Next** or use the navigation pane to save the configurations and continue.

Configuring the AutoUpdate schedule

Configure these options to schedule and specify updates and mirror tasks to run from the destination computers once the package is installed.

From the **AutoUpdate Schedule** dialog box, you can:

- Add a new update or mirror task.
- Edit existing update and mirror tasks.
- Delete existing update and mirror tasks.

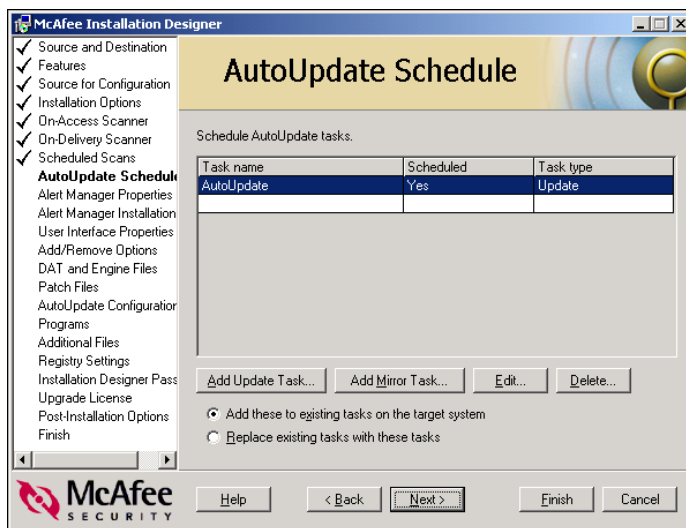


Figure 3-16. AutoUpdate Schedule

Adding an update task

To add an update task:

- 1 Click **Add Update Task**. The **Add AutoUpdate Task** dialog box appears.
- 2 Name the task in the **Task name** box.

NOTE

The **OK** button is not enabled until after you configure and schedule the update task.

- 3 Click **Configure AutoUpdate Properties**. The **VirusScan AutoUpdate Properties** dialog box appears.

The title bar includes **(MID)** to identify that the dialog box is being accessed via the McAfee Installation Designer, and not directly through VirusScan Enterprise.

- 4 Use the options on this dialog box to configure and schedule the update task. For information about these options, see the *VirusScan Enterprise 7.0 Product Guide*.
- 5 When finished configuring and scheduling the task, click **OK** to return to the **Add AutoUpdate Task** dialog box.
- 6 Click **OK** to save the update task and return to the **McAfee Installation Designer** wizard.
- 7 When you complete configuring update tasks, choose whether to add this list of tasks to the existing tasks on the destination system, or to replace the existing tasks.
- 8 When you complete adding, editing, and deleting tasks, click **Next** or use the navigation pane to save the configurations and continue.

Editing an update task

To edit an update task:

- 1 Select the desired update task in the **AutoUpdate** dialog box, then click **Edit**. The **Edit AutoUpdate Task** dialog box appears.

NOTE

The **OK** button is not enabled until after you configure, schedule, or rename the update task.

- 2 Edit the task name, if desired, then click **Configure AutoUpdate Properties**. The **VirusScan AutoUpdate Properties** dialog box appears.

The title bar includes **(MID)** to identify that the dialog is being accessed via the McAfee Installation Designer, and not directly through VirusScan Enterprise.

- 3 Use these options to configure and schedule the update task. For information about these options, see the *VirusScan Enterprise 7.0 Product Guide*.
- 4 When finished configuring and scheduling the task, click **OK** to return to the **Edit AutoUpdate Task** dialog box.
- 5 Click **OK** to save the update task and return to the **McAfee Installation Designer** wizard.

- 6 When you complete configuring update tasks, choose whether to add this list of tasks to the existing tasks on the destination computer, or to replace the existing tasks on the destination computer with this list of tasks.
- 7 When you complete adding, editing, and deleting tasks, click **Next** or use the navigation pane to save the configurations and continue.

Deleting update tasks

To delete an update task:

- 1 Select the desired update task in the **AutoUpdate Schedule** dialog box, then click **Delete**.
- 2 Click **Yes** when prompted to verify that you want to delete the task.
- 3 When you complete configuring the update tasks, choose whether to add the this list of tasks to the existing tasks on the destination system, or to replace the existing tasks on the destination system with this list of tasks.
- 4 When you complete adding, editing, and deleting tasks, click **Next** or use the navigation pane to save the configurations and continue.

Adding a mirror task

To add a mirror task:

- 1 Click **Add Mirror Task**. The **Add Mirror Task** dialog box appears.
- 2 Name the task in the **Task name** box.

NOTE

The **OK** button is not enabled until after you configure and schedule the mirror task.

- 3 Click **Configure Mirror Properties**. The **VirusScan AutoUpdate Properties** dialog box appears.

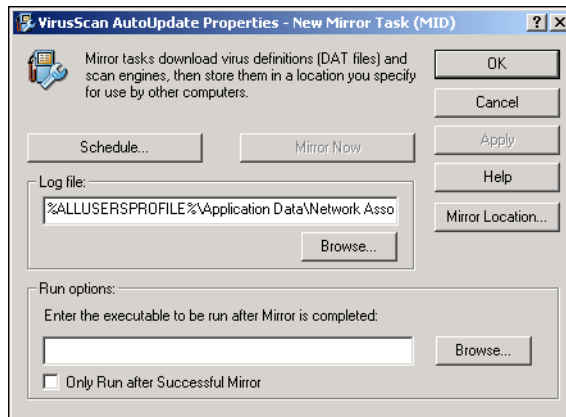


Figure 3-17. VirusScan AutoUpdate Properties

The title bar includes **(MID)** to identify that the dialog box is being accessed via the McAfee Installation Designer, and not directly through VirusScan Enterprise.

- 4 Use the options on this dialog box to configure and schedule the mirror task. For information about these options, see the *VirusScan Enterprise 7.0 Product Guide*.
- 5 When finished configuring and scheduling the task, click **OK** to return to the **Add Mirror Task** dialog box.
- 6 Click **OK** to save the update task and return to the **McAfee Installation Designer** wizard.

- 7 When you complete configuring update tasks, choose whether to add this list of tasks to the existing tasks on the destination system, or to replace the existing tasks.
- 8 When you complete adding, editing, and deleting tasks, click **Next** or use the navigation pane to save the configurations and continue.

Editing a mirror task

To edit a mirror task:

- 1 Select the desired update task in the **AutoUpdate Schedule** dialog box, then click **Edit**. The **Edit Mirror Task** dialog box appears.

NOTE

The **OK** button is not enabled until after you configure, schedule, or rename the mirror task.

- 2 Edit the task name, if desired, then click **Configure Mirror Properties**. The **VirusScan AutoUpdate Properties** dialog box appears.

The title bar includes **(MID)** to identify that the dialog is being accessed via the McAfee Installation Designer, and not directly through VirusScan Enterprise.

- 3 Use these options to configure and schedule the mirror task. For information about these options, see the *VirusScan Enterprise 7.0 Product Guide*.
- 4 When finished configuring and scheduling the task, click **OK** to return to the **Edit Mirror Task** dialog box.
- 5 Click **OK** to save the mirror task and return to the **McAfee Installation Designer** wizard.
- 6 When you complete configuring scheduled mirror tasks, choose whether to add this list of tasks to the existing tasks on the destination computer, or to replace the existing tasks on the destination system with this list of tasks.
- 7 When you complete adding, editing, and deleting tasks, click **Next** or use the navigation pane to save the configurations and continue.

Deleting mirror tasks

To delete a mirror task:

- 1 Select the desired mirror task in the **AutoUpdate Schedule** dialog box, then click **Delete**.
- 2 Click **Yes** when prompted to verify you want to delete the task.
- 3 When you complete configuring the tasks, choose whether to add the this list of tasks to the existing tasks on the destination computer, or to replace the existing tasks on the destination computer with this list of tasks.
- 4 When you complete adding, editing, and deleting tasks, click **Next** or use the navigation pane to save the configurations and continue.

Configuring Alert Manager properties

Configure these options to specify how VirusScan Enterprise notifies Alert Manager once the package is installed on the client computer.

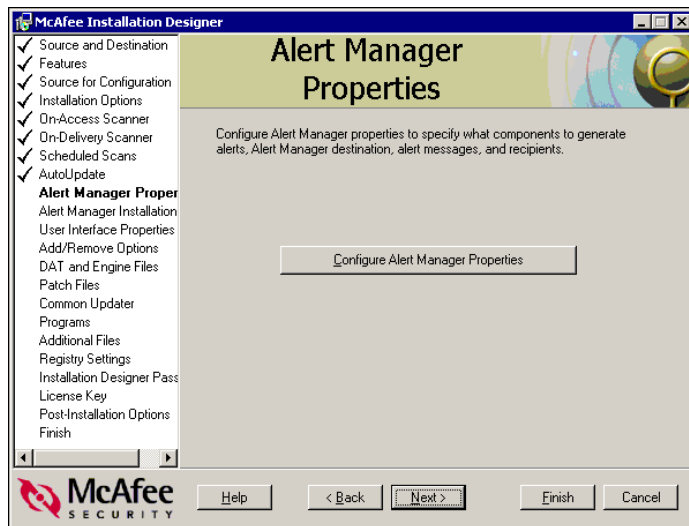


Figure 3-18. Alert Manager Properties

To configure VirusScan Enterprise alerting:

- 1 From the **Alert Manager Properties** dialog box, click **Configure Alert Manager Properties**. The **Alert Properties** dialog box from the VirusScan Console appears.

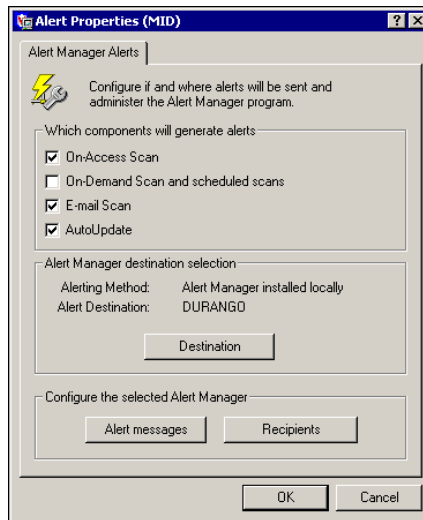


Figure 3-19. Alert Properties

The title bar includes **(MID)** to identify that the dialog box is being accessed via the McAfee Installation Designer, and not directly through VirusScan Enterprise.

- 2 Use the options on this tab to configure the alerting settings. For more information, see the *VirusScan Enterprise 7.0 Product Guide*.
- 3 Click **OK**.
- 4 Click **Next** or use the navigation pane to save the configurations and continue.

Configuring Alert Manager installation

Configure the Alert Manager installation options to specify location and service account options.

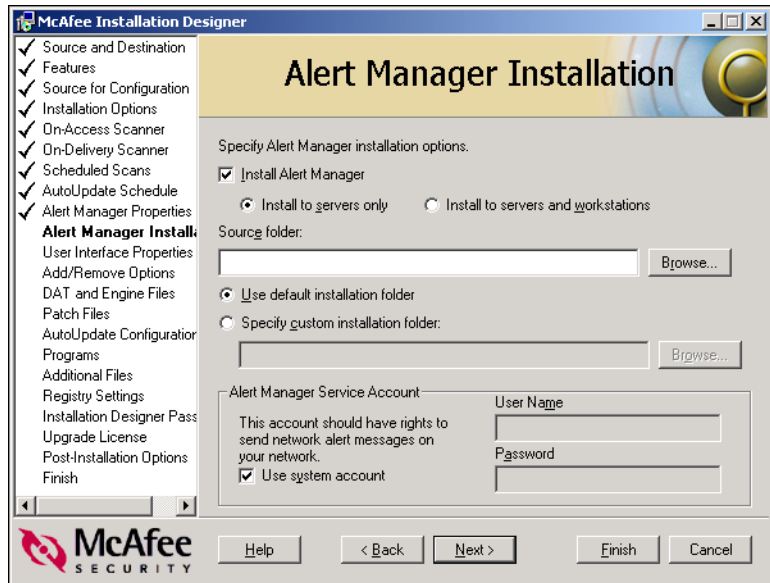


Figure 3-20. Alert Manager Installation

To configure Alert Manager installation options:

- 1 Select **Install Alert Manager**.

NOTE

If you do not want to install Alert Manager, make sure that **Install Alert Manager** is deselected, then click **Next**.

- 2 Choose whether to install to servers only, or to both servers and workstations.
- 3 In **Source folder**, specify the path to the location of the source Alert Manager files.

NOTE

If the VirusScan Enterprise source contains an Alert Manager (AMG) subfolder, the path to this subfolder appears in **Source folder** by default.

- 4 Choose whether to install to the default installation folder, or specify a custom installation folder. To specify a custom folder, you must browse to the desired location.
- 5 Under **Alert Manager Service Account**:
 - ◆ Select **Use system account** if you want Alert Manager to use the local account on the computer where you are installing Alert Manager.
 - ◆ Deselect **Use system account** if you want Alert Manager to use a specific account. If you deselect **Use system account**, you must enter the **User Name** and **Password** of the desired account.
- 6 Click **Next** or use the navigation pane to save the configurations and continue.

Configuring user interface properties

Configure the user interface properties to specify which parts of the VirusScan Enterprise user interface are available on the client computers.

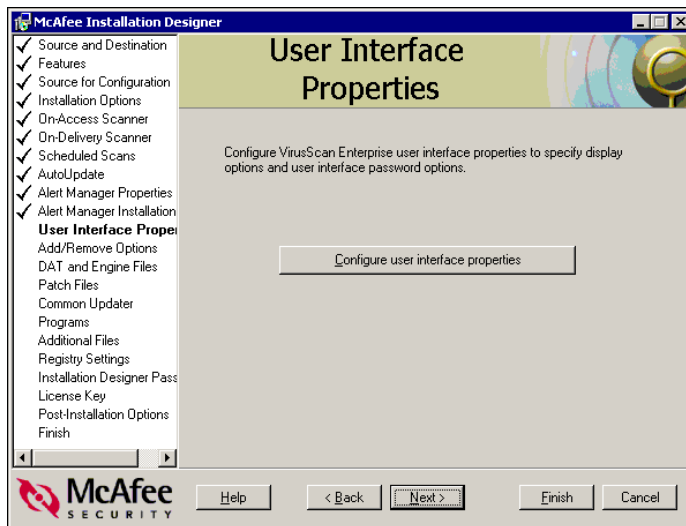


Figure 3-21. User Interface Properties

To configure user interface options:

- 1 From the **User Interface Properties** dialog box, click **Configure user interface properties**. The **User Interface Options** dialog box from the VirusScan Console appears.

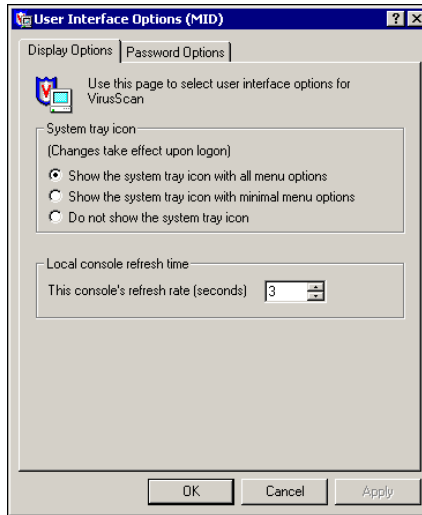


Figure 3-22. User Interface Options

The title bar includes **(MID)** to identify that the dialog box is being accessed via the McAfee Installation Designer, and not directly through VirusScan Enterprise.

- 2 Use the options of the **User Interface Options** dialog box to configure the user interface options. For more information, see the *VirusScan Enterprise 7.0 Product Guide*.
- 3 Click **OK** to return to the **McAfee Installation Designer** wizard.
- 4 Click **Next** or use the navigation pane to save the configurations and continue.

Setting Add/Remove program options

Configure the add/remove options to specify which information and options appear in the Control Panel for **Add/Remove Programs**.

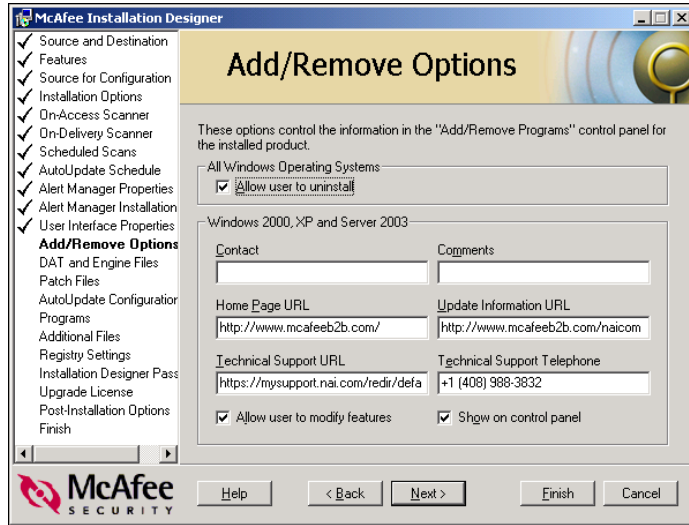


Figure 3-23. Add/Remove Options

For all Windows versions

Select **Allow user to uninstall** to give the end user on the client computer the ability to use the Control Panel to uninstall the program manually. Deselecting this checkbox prevents the end-user from uninstalling the program manually from the Control Panel.

For Windows 2000, Windows XP, and Windows Server 2003

For installations on Windows 2000, Windows XP, and Windows Server 2003 client computers, specify additional configuration options. Enter any information that you want the user to see when the **Add/Remove Options** dialog box is visible.

1 Enter information into the appropriate boxes:

- ◆ **Contact**
- ◆ **Comments**
- ◆ **Home Page URL**
- ◆ **Update Information URL**
The URL that VirusScan Enterprise uses to check for updates.

- ◆ **Technical Support URL**
The URL for VirusScan Enterprise technical support.
 - ◆ **Technical Support Telephone**
The telephone number for VirusScan Enterprise technical support.
- 2 Select **Allow user to modify features** to give the end user on the client computer the ability to modify VirusScan Enterprise through the **Add/Remove Programs** dialog box of the **Control Panel**.
 - 3 Click **Show on control** to allow the user to see and select VirusScan Enterprise through the **Add/Remove Programs** dialog box of the **Control Panel**.
 - 4 Click **Next** or use the navigation pane to save the configurations and continue.

Configuring DAT files and engine

Configure the DAT and engine file options to specify which DAT files and engine files to use with the installation.

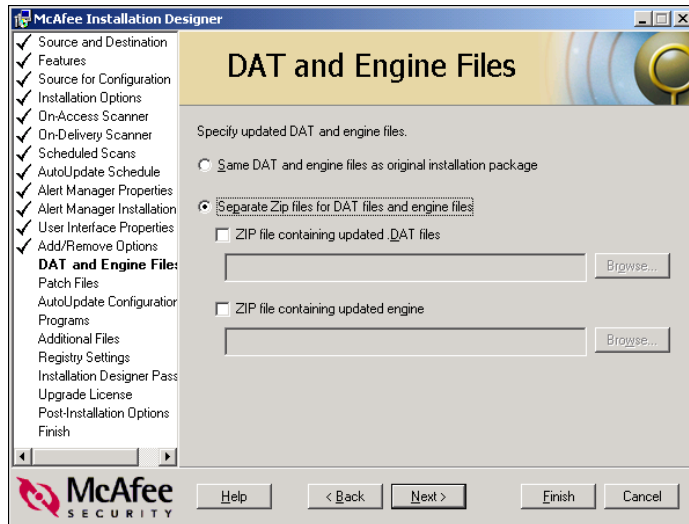


Figure 3-24. DAT and Engine Files

You can use the DAT and engine files provided in the original package, or use updated DAT and engine files. If you want updated DAT and engine files, you must choose a separate .ZIP file for DAT files and a separate .ZIP file for engine files.

Using separate .ZIP files

To use two separate .ZIP files for the DAT files and engine files:

- 1 Select **Separate ZIP files for DATs and engine**.
- 2 Browse to and select the .ZIP file containing DAT files.
- 3 Browse to and select the .ZIP file containing the updated engine files.
- 4 Click **Next** or use the navigation pane to save the configurations and continue.

Configuring patch files

Select any patch files that may be necessary and add them to the VirusScan Enterprise installation package.

Configure the patch file options to set and specify which patch files to include in the installation on the destination computers.

From the **Patch Files** dialog box, you can:

- Add a new patch file.
- Edit existing patch files.
- Delete existing patch files.

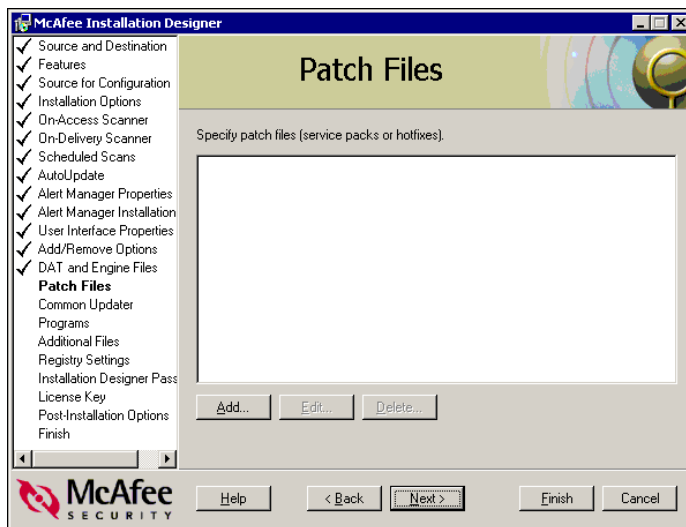


Figure 3-25. Patch Files

Adding patch files

To add patch files to the installation package:

- 1 Click **Add**.
- 2 Browse to the desired patch file.
- 3 Select the file and click **Open**. The full name and path of the file appears in the patch file list.
- 4 When finished adding, editing, and deleting patch files, click **Next** or use the navigation pane to save the configurations and continue.

Editing patch files

To edit a patch file already listed in the patch file list:

- 1 Click the file name in the list to select it.
- 2 Click **Edit**.
- 3 Use the **Select Patch File to Install** dialog box to edit the patch file.
- 4 Click **Open**. The changed file name and path appear in the patch file list.
- 5 When finished adding, editing, and deleting patch files, click **Next** or use the navigation pane to save the configurations and continue.

Deleting patch files

To delete a patch file already listed in the patch file list :

- 1 Click the file name in the list to select it.
- 2 Click **Delete**.
- 3 When finished adding, editing, and deleting patch files, click **Next** or use the navigation pane to save the configurations and continue.

Configuring AutoUpdate

Configure these options to specify how AutoUpdate functions once the package is installed on the destination computer.

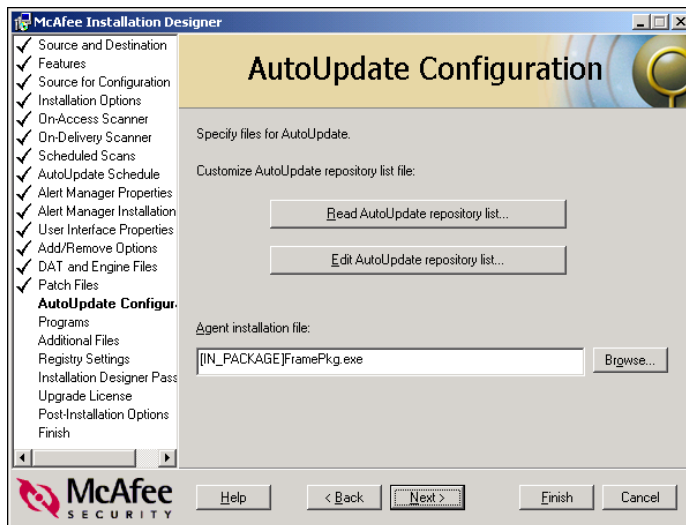


Figure 3-26. AutoUpdate Configuration

You may configure any of the following by browsing to a configuration file. The files you are using depend on the location that AutoUpdate uses to retrieve updates.

- **AutoUpdate repository list file**
Browse to SITELIST.XML and edit the list if desired.
- **Agent installation file**
Browse to the agent installation file.

AutoUpdate repository list file

The repository list allows you to define the different repository sites from which computers using this installation update its DAT and engine files. You can also define the priority of the repository sites. To edit the list of repositories in the repository list file for this package:

- 1 Click **Read AutoUpdate repository list** to select the SITELIST.XML file.
- 2 Click **Edit AutoUpdate repository list** and the **Edit AutoUpdate Repository List** dialog box appears. The options on this dialog box are divided among two tabs: **Repositories** and **Proxy settings**.

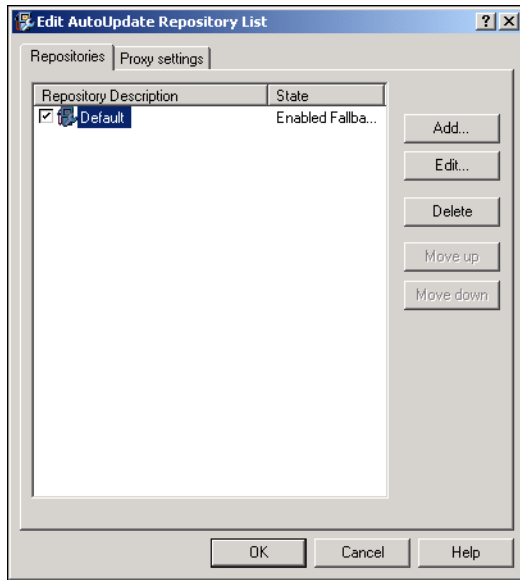


Figure 3-27. Edit AutoUpdate Repository List

- 3 To add a repository site to the list on the **Repositories** tab, click **Add**. The **Repository settings** dialog box appears.

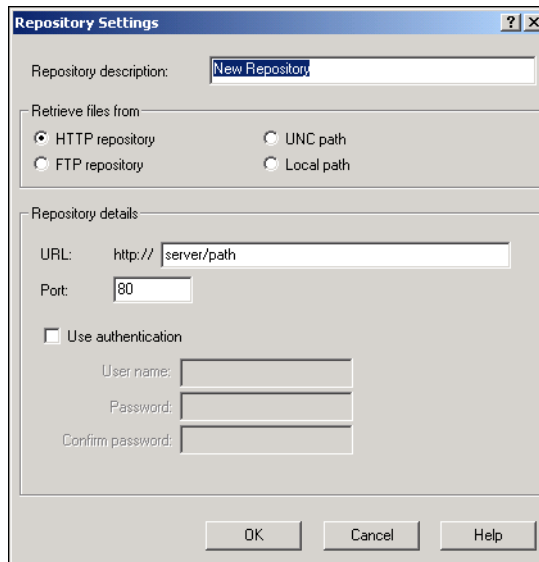


Figure 3-28. Repository Settings

- ◆ Enter the name of the new site in the **Repository description** box.
 - ◆ Under **Retrieve file from**, select the type of the desired repository site.
 - ◆ Under **Repository details**, define the location, port (if applicable), and the credentials for the repository site.
 - ◆ Repeat as necessary until all desired sites have been defined, then click **OK**.
- 4 To edit the settings for a repository site that is already in the list, select the site and click **Edit** in the **Repository Settings** dialog box, make any changes, then click **OK**.
 - 5 Select the **Proxy settings** tab.

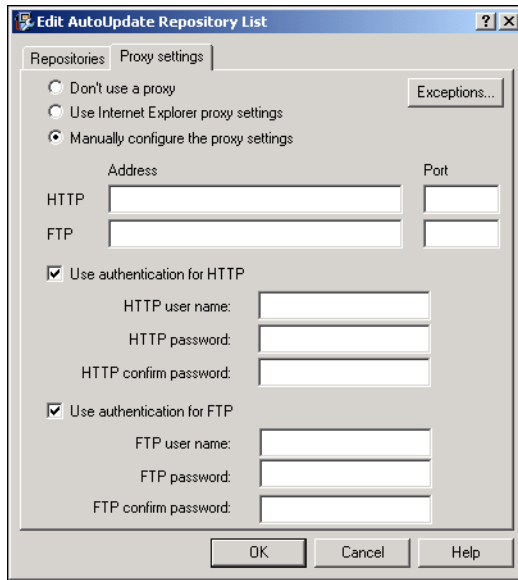


Figure 3-29. Proxy settings

- 6 Select the appropriate option:
 - ◆ **Don't use a proxy**
 - ◆ **Use Internet Explorer proxy settings**
 - ◆ **Manually configure the proxy settings**
If you select this option, you must enter the HTTP or FTP address and port. If the proxy settings require authentication, enter the authentication in the appropriate authentication boxes.
- 7 If you need to identify exceptions to the proxy settings, click **Exceptions**.
- 8 Enter the exceptions.

NOTE

When entering multiple exceptions, you must separate the entries with a semicolon.

- 9 Click **OK**.
- 10 Click **OK** on the **Update Site Manager** dialog box when you have finished editing the repository list.

Setting programs to run after installation

Configure the options that specify which programs you want to run on the destination computers once the package is installed.

From the **Programs** dialog box, you can:

- Add a new program.
- Edit existing program entries in the list.
- Delete existing program entries in the list.

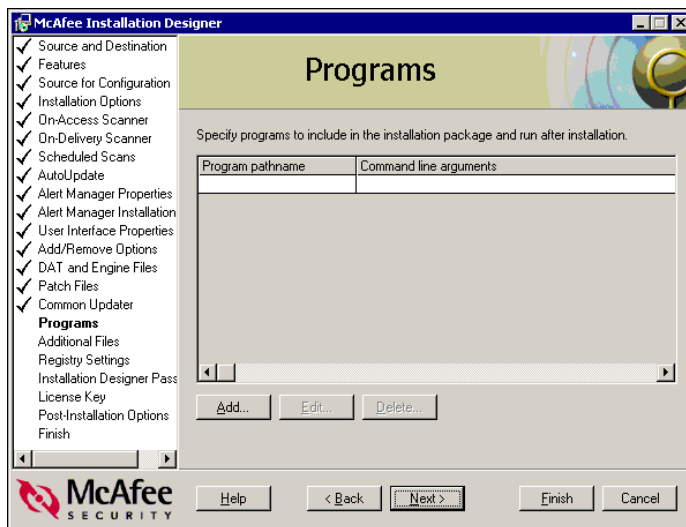


Figure 3-30. Programs

Adding programs to run after installation

To add programs to run after the installation package finishes installing:

- 1 Click **Add**.
- 2 In the **Add Program** dialog box, click **Browse** to open the **Select Program** dialog box and select a program file.
- 3 Type the command line arguments into the **Command line arguments** text box. These define the parameters for how you want the program to run.
- 4 Click **OK** to return to the **McAfee Installation Designer** wizard. The program is added to the program list.

- 5 When finished adding, editing, and deleting programs to run, click **Next** or use the navigation pane to save the configurations and continue.

Editing program entries

To edit an entry already listed in the program file list:

- 1 Click the file name in the list to select it.
- 2 Click **Edit**.
- 3 In the **Add Program** dialog box, type any changes into the **Program** and **Command line arguments** boxes as required.
- 4 Click **OK** to return to the **McAfee Installation Designer** wizard. The changed program configuration information is displayed in the program list.
- 5 When finished adding, editing, and deleting programs to run, click **Next** or use the navigation pane to save the configurations and continue.

Deleting program entries

To delete an entry already listed:

- 1 Click the file name in the list to select it.
- 2 Click **Delete**.
- 3 Click **Yes** when asked if you are sure you want to delete the program.
- 4 When finished adding, editing, and deleting programs, click **Next** or use the navigation pane to save the configurations and continue.

Setting additional files to install

Configure these options to include additional files in the installation package. This feature is useful if you want to include company-specific files, such as a custom readme file.

From the **Additional Files** dialog box, you can:

- Add a file.
- Edit an additional file entry.
- Delete additional files.

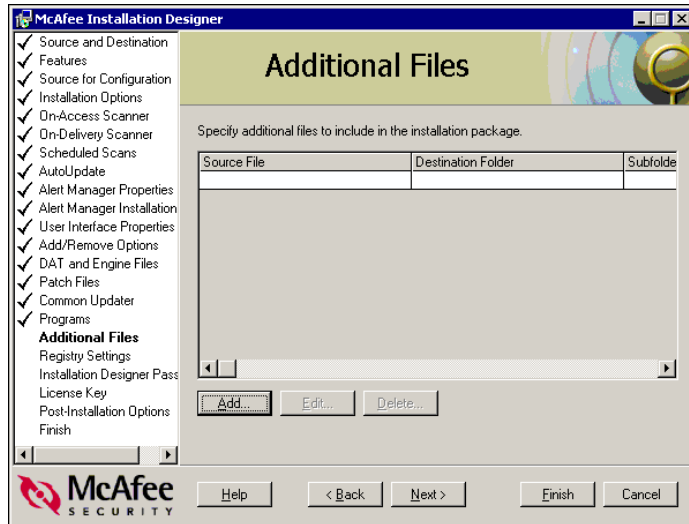


Figure 3-31. Additional Files

Adding files to the installation package

To add extra files to the installation package:

- 1 Click **Add**.
- 2 In the **Additional Files** dialog box, click **Browse** to open the **Select Extra File to Install** dialog box and browse to and select the source file to include it in **Source File**.
- 3 Select a destination folder from the **Destination Folder** list. This is the folder where the extra files are installed on the destination computer.
- 4 Type an optional subfolder in the **Subfolders** box, if desired.
- 5 Click **OK**.
- 6 When finished adding, editing, and deleting additional files, click **Next** or use the navigation pane to save the configurations and continue.

Editing existing additional files

To edit the source file path, the destination folder, or subfolder of a file already listed in the additional file list:

- 1 Click the file in the additional file list to select it.
- 2 Click **Edit**.
- 3 In the **Additional File** dialog box, click **Browse** to open the **Select Extra File to Install** dialog box and browse to and select a different source file to include it in **Source File**.
- 4 Change the destination folder from the **Destination Folder** list, if desired.
- 5 Type a different optional subfolder in the **Subfolders** box, if desired.
- 6 Click **OK**.
- 7 When finished adding, editing, and deleting additional files, click **Next** or use the navigation pane to save the configurations and continue.

Deleting existing additional files

To delete an additional file already listed in the **Source File** list:

- 1 Click the file in the additional file list to select it.
- 2 Click **Delete**.
- 3 Click **Yes** when asked if you are sure you want to delete the file.

NOTE

If you uninstall the VirusScan Enterprise software package, any files that you added to the installation are removed when the software is removed.

- 4 When finished adding, editing, and deleting additional files, click **Next** or use the navigation pane to save the configurations and continue.

Setting registry settings

Create a single .REG file for all Windows versions, or create separate .REG files for installations on Windows NT, Windows 2000, and Windows XP if you need to modify system-specific settings.

NOTE

Using this configuration dialog box requires that you understand the REGEDIT.EXE program and registry keys well enough to create, use, change and delete them or their values. Instruction in the use and management of registry keys is beyond the scope of this product guide.

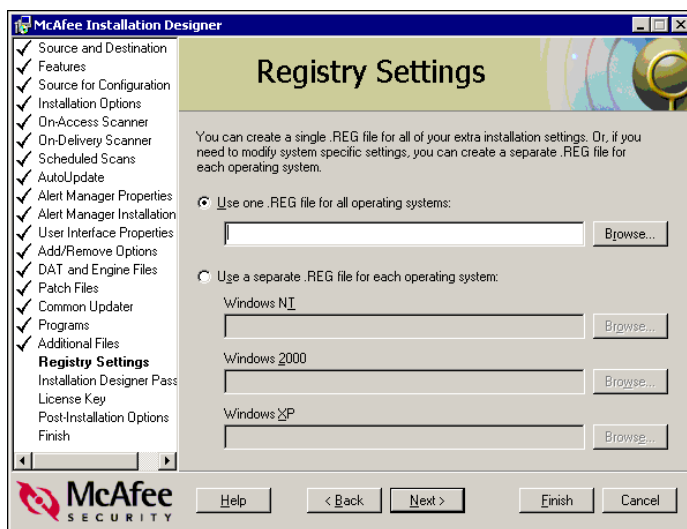


Figure 3-32. Registry Settings

See the appropriate section below, depending on whether you want to use a single .REG file for all Windows installations or separate .REG files for each version of Windows.

To use one .REG file for all Windows versions:

- 1 Select **Use one .REG file for all operating systems.**
- 2 Specify an existing .REG file to be used in the installation package. Do this by either typing the full file name and path into the text box, or clicking **Browse** and selecting a .REG file.
- 3 Click **Next** or use the navigation pane to save the configurations and continue.

To use separate .REG files for different Windows versions:

- 1 Select **Use a separate .REG file for each operating system**.
- 2 For each version of Windows, browse to and select the desired .REG file to be used in the installation package.
- 3 Click **Next** or use the navigation pane to save the configurations and continue.

Setting Installation Designer password

The **Installation Designer Password** dialog box allows you to use a current password, or specify and confirm a new password to prevent others with Installation Designer rights from reconfiguring the settings that you are specifying.

NOTE

Using a configuration password is strongly recommended when creating a new package.

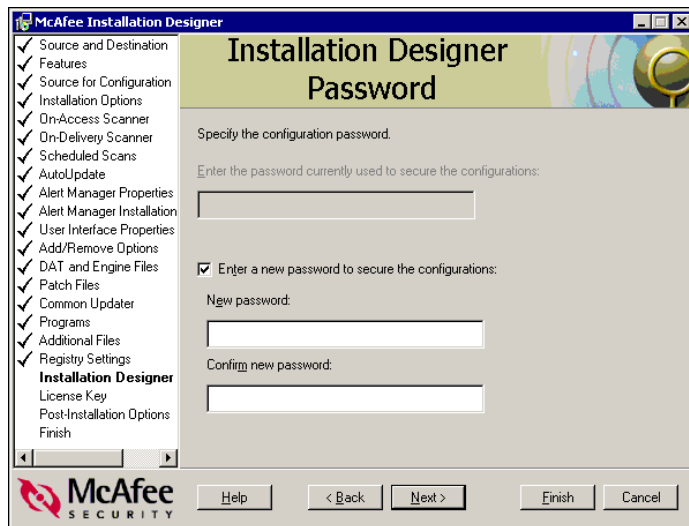


Figure 3-33. Installation Designer Password

If you are modifying a previously modified package or settings file, you may want to use the current password. To use the current password:

- 1 Deselect **Enter a new password to secure the configurations**.

- 2 Enter the password in the **Enter the password currently used to secure the configurations** box.
- 3 Click **Next** or use the navigation pane to save the configurations and continue.

To create a new password for the configurations:

- 1 Select **Enter a new password to secure the configurations**.
- 2 Enter the desired password in the **New password** and **Confirm new password** boxes.
- 3 Click **Next** or use the navigation pane to save the configurations and continue.

Upgrading the license

Select **Upgrade an evaluation version of VirusScan Enterprise to a registered version** if you are modifying an evaluation version of the software and you wish to upgrade to a licensed version.

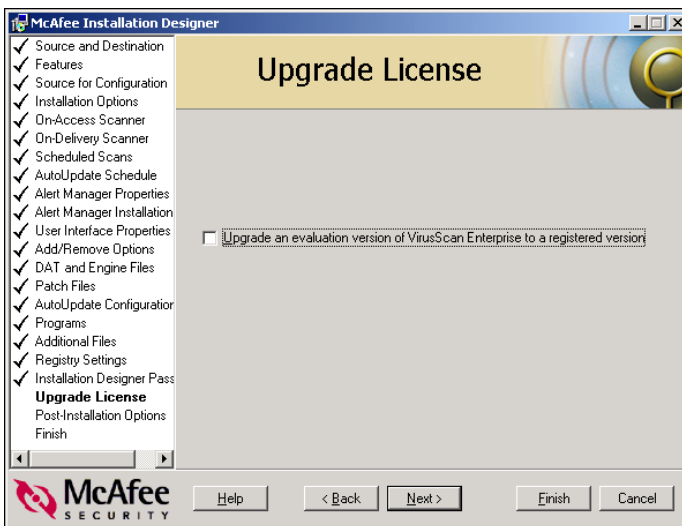


Figure 3-34. Upgrade License

NOTE

This configuration will take place in the .CAB file and not in the LICENSE.TXT. file. When this installation package is used, the evaluation installation dialog boxes are displayed. Once running, the change to licensed version occurs when VirusScan Enterprise locates the .CAB file in the folder. The **About** dialog box then displays **Licensed**.

Configuring post-installation options

Specify additional functions that the installation should perform after the package has installed VirusScan Enterprise on the destination computer.

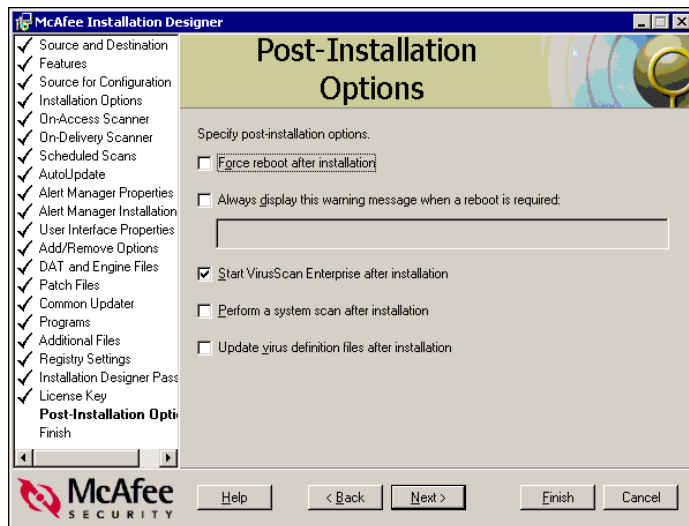


Figure 3-35. Post-Installation Options

- 1 Select the options to include in the installation package:
 - ◆ **Force reboot after install**
Automatically reboots the client computer after installing the package. The end user is prompted to save any unsaved work, but does not have the option to reboot later.
 - ◆ **Always display this warning message when a reboot is required**
Displays a message that a reboot is required when the installation is complete. If you select this checkbox, enter the text to display in the warning message.

- ◆ **Start VirusScan Enterprise after installation**
Automatically starts VirusScan, which begins running in the background immediately after installation is complete.
- ◆ **Perform a System Scan after installation**
VirusScan automatically runs an on-demand scan on the client computer immediately after installation is complete. This option applies only if you select to install the product silently.
- ◆ **Update virus definition files after installation**
VirusScan automatically goes out to the update site to download new DAT and engine files. This option applies only if you select to install the product silently.

NOTE

You can use the **DAT and Engine Files** dialog box to include the most recent updates with the installation package. If your network is large, including the updates with the package can save network resources.

- 2 Click **Next** or use the navigation pane to save the configurations and continue.

Reviewing and saving your installation configuration

The final **Finish** dialog box lists all the configurations for the current package. Review them to make sure they are correct. To change any of the configurations, use the navigation pane to return to the appropriate dialog box, and edit those features.

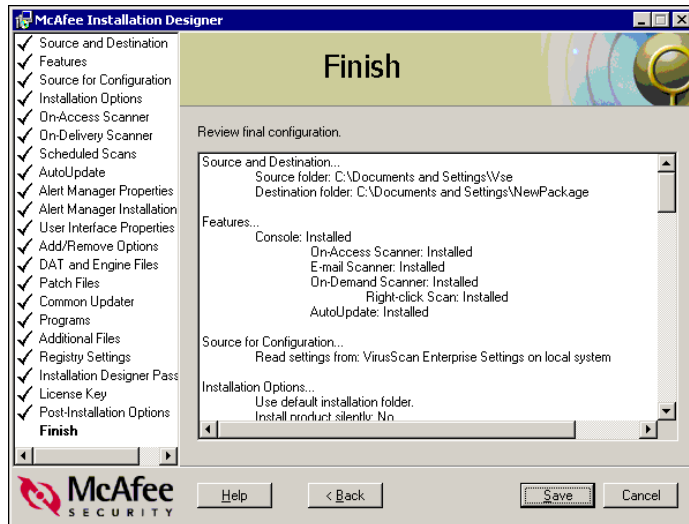


Figure 3-36. Finish

Click **Save** to save the package when the configurations are to your liking. The Installation Designer saves the package as a VSE700.MSI file in the destination folder that you specified. (See [Setting source and destination folders on page 26.](#))

Generating a settings file

If you select **Modify an existing installation by generating a settings file** (to generate a settings file) on the **Welcome** dialog box, the following items appear in the navigation pane of the **McAfee Installation Designer** wizard:

- **Source for configuration**
- **Destination**
- **Type**
- **On-Access Scanner**
- **On-Delivery Scanner**
- **Schedule Scans**
- **AutoUpdate Schedule**
- **Alert Manager Properties**
- **User Interface Properties**
- **Registry Settings**
- **Installation Designer Password**
- **Upgrade License**
- **Finish**

NOTE

If you want to create workstation- and server-specific settings files they need to run McAfee Installation Designer twice. If you want to deploy the settings files with McAfee AutoUpdate Architect, you must choose the same destination folder for each of these files. However, if you are configuring settings files for different languages, you must not mix the different languages in the same destination folder.

To generate a settings file:

- 1 From the **Welcome** dialog box, select **Modify an existing installation by generating a settings file**.
- 2 Click **Next**. The **Source for Configuration** dialog box appears, with a list of all configurable components in the navigation pane.

NOTE

You can select any item in the navigation pane to configure it, or you can complete the options in each dialog box, then click **Next** to advance to the next item in the list.

Setting source for configuration

Identify the source settings file to be used for configuration.

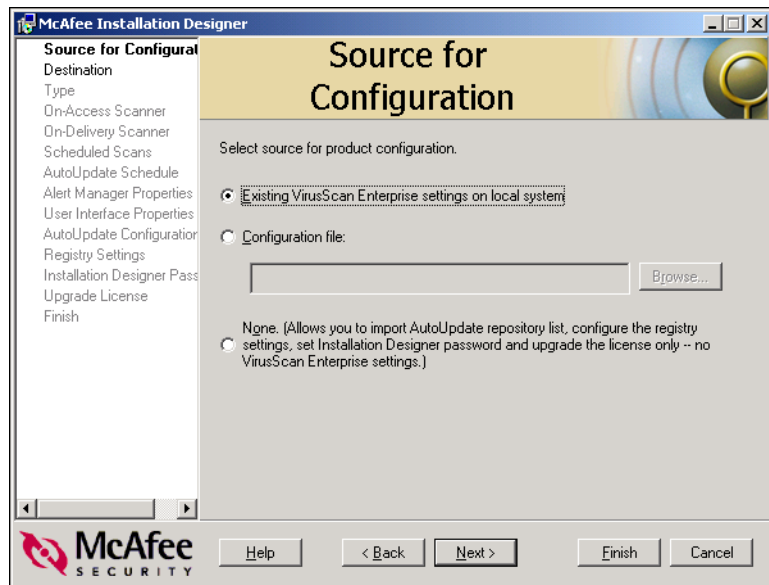


Figure 3-37. Source for Configuration

1 Select the source for the configuration settings:

- ◆ **Existing VirusScan Enterprise settings on local system**
Select this option to use the configuration settings from the VirusScan Enterprise installation on the system where you are running McAfee Installation Designer.

NOTE

If you select this option, the package being modified must be in the same language as the VirusScan Enterprise version on the local system.

- ◆ **Configuration file**
Select this option to use the configuration settings from an existing configuration file. If you select this option, you must browse to the desired settings (.CAB) file.

- ◆ **None.** (Allows you to configure the registry settings, license key, and the Installation Designer password only — no VirusScan Enterprise settings.)

Select this option if you wish only to configure the registry settings, license key, or Installation Designer password. This allows you to create a much smaller package.

- 2 Click **Next** or use the navigation pane to save the configurations and continue.

Setting destination options

Configure the options of the **Destination** dialog box to specify the location where the settings file will be saved, and whether to create the configuration package for servers, workstations, or both.

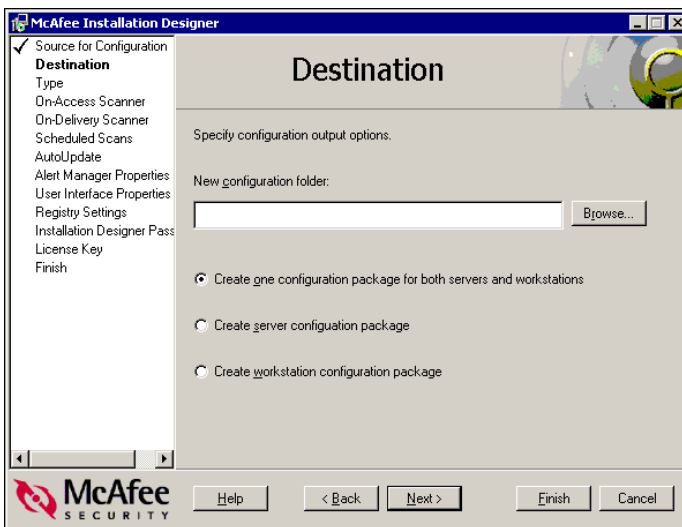


Figure 3-38. Destination

- 1 Browse to the desired folder where you want to save the settings file when the configuration is complete. If creating a new folder to save the file, type in the path with the name of the new folder in **New configuration folder**.

- 2 Choose whether to:
 - ◆ Create one configuration package for both servers and workstations
 - ◆ Create server configuration package
 - ◆ Create workstation configuration package
- 3 Click **Next** or use the navigation pane to save the configurations and continue.

Setting configuration type

Specify the configuration type on the **Type** dialog box.

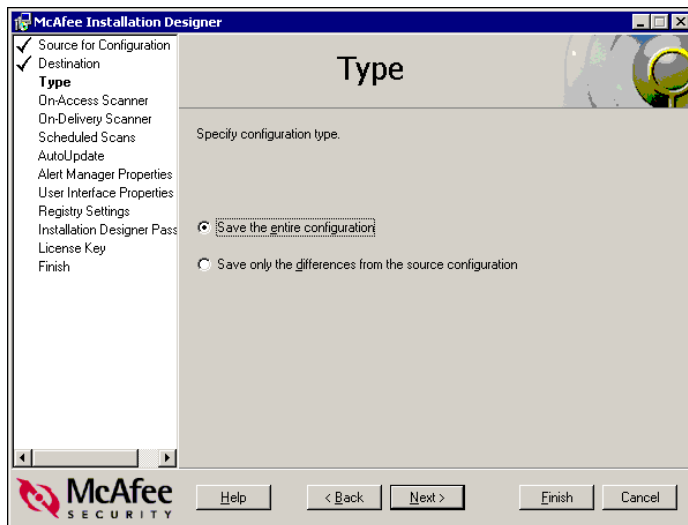


Figure 3-39. Type

NOTE

This dialog box appears only if you selected **Modify an existing installation by generating settings file** on the **Welcome** dialog box.

- 1 Select one of the following:
 - ◆ **Save the entire configuration** creates and saves a new complete configuration file.
 - ◆ **Save only the differences from the source configuration** saves only the differences that you specify during the configuration. Select this option to reduce the size of the deployment package, or to deploy only certain settings while not affecting the rest of the settings on the destination computers. (Certain settings might be configured differently among the destination systems.)

NOTE

If you select **Save only the differences from the source configuration**, you are not able to use the resulting settings file as a source for a future configuration.

- 2 Click **Next** or use the navigation pane to save the configurations and continue.

Configuring the On-Access Scanner

Configure the on-access scanning options to specify how on-access scanning functions once the package is installed on the destination computer.

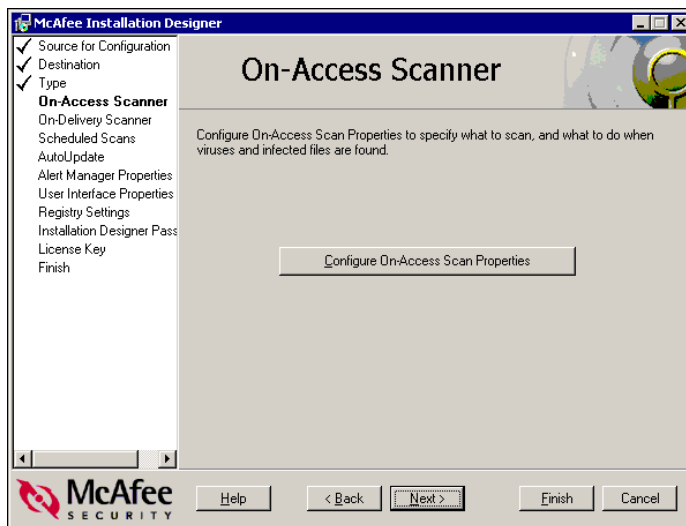


Figure 3-40. On-Access Scanner

To configure on-access scanning:

- 1 From the **On-Access Scanner** dialog box, click **Configure On-Access Scan Properties**. The **VirusScan On-Access Scan Properties** dialog box from the VirusScan Console appears.

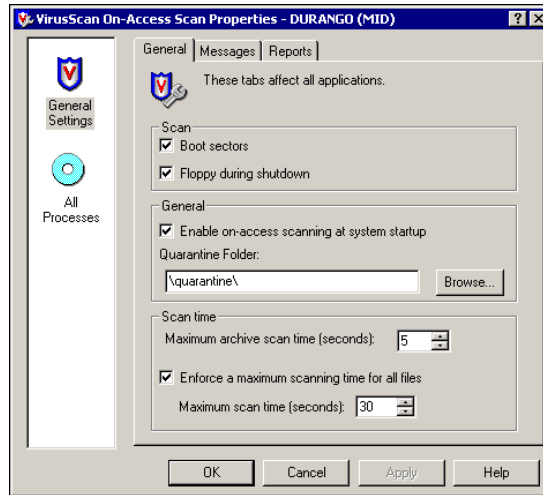


Figure 3-41. VirusScan On-Access Scan Properties

The title bar includes **(MID)** to identify that the dialog box is being accessed via the McAfee Installation Designer, and not directly through VirusScan Enterprise.

- 2 Use these options to configure the on-access scanner. For details, see the *VirusScan Enterprise 7.0 Product Guide*.
- 3 Click **OK** to return to the **McAfee Installation Designer** wizard.
- 4 Click **Next** or use the navigation pane to save the configurations and continue.

Configuring On-Delivery Scanner

Configure these options to specify how e-mail scanning functions once the package is installed on the client computer.

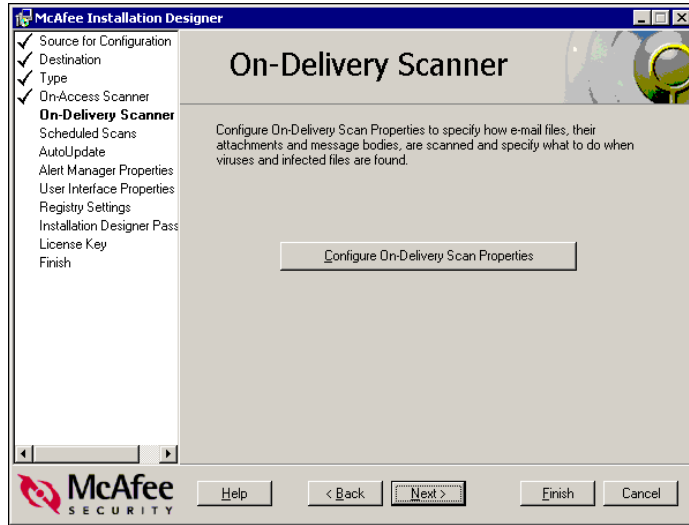


Figure 3-42. On-Delivery Scanner

To configure the On-Delivery Scanner:

- 1 From the **On-Delivery Scanner** dialog box, click **Configure On-Delivery ScanProperties**. The **On-Delivery Scan Properties** dialog box from the VirusScan Console appears.

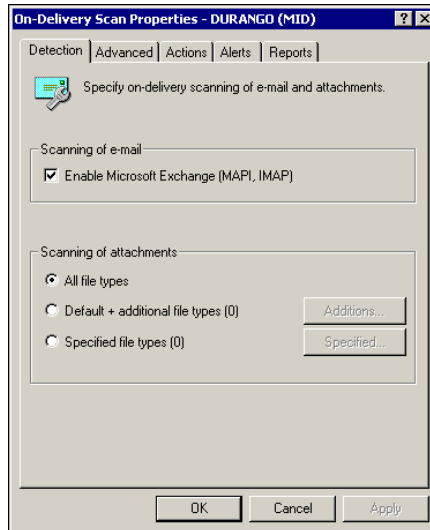


Figure 3-43. On-Delivery Scan Properties

The title bar includes **(MID)** to identify that the dialog box is being accessed via the McAfee Installation Designer, and not directly through VirusScan Enterprise.

- 2 Use the options on these tabs to configure the e-mail scan settings. For more information, see the *VirusScan Enterprise 7.0 Product Guide*.
- 3 Click **OK**.
- 4 Click **Next** or use the navigation pane to save the configurations and continue.

Configuring scheduled scans

Configure these options to set and specify scheduled scans to run on the destination computers once the package is installed.

From the **Scheduled Scans** dialog box, you can:

- Add a new scheduled scan task.
- Edit existing scheduled scan tasks.
- Delete existing scheduled scan tasks.

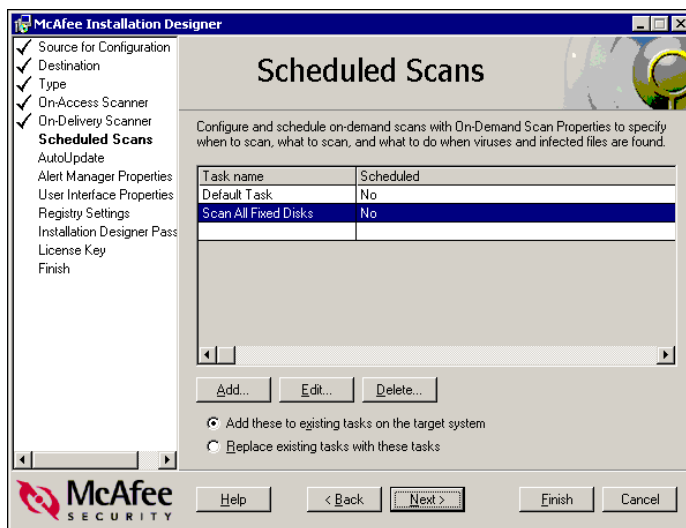


Figure 3-44. Scheduled Scans

Adding scheduled scan tasks

To add a scheduled scan:

- 1 Click **Add**. The **Add On-Demand Scan Task** dialog box appears.

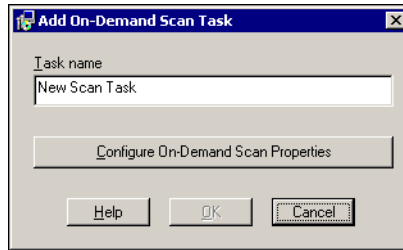


Figure 3-45. Add On-Demand Scan Task

- 2 Name the task in the **Task name** box.

NOTE

The **OK** button is not enabled until after you configure and schedule the scan task.

- 3 Click **Configure On-Demand Scan Properties**. The **VirusScan On-Demand Scan Properties** dialog box appears.

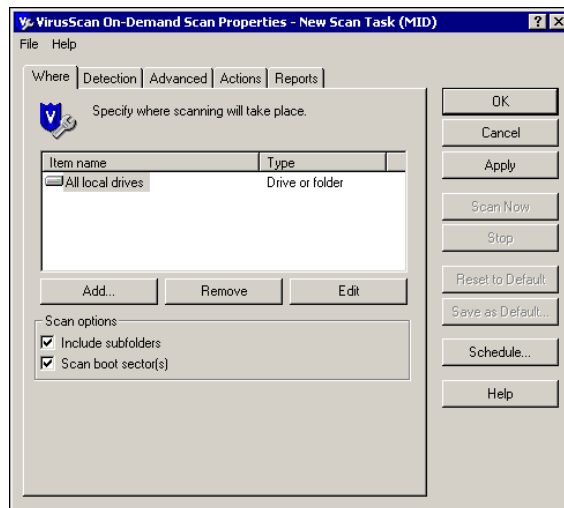


Figure 3-46. VirusScan On-Demand Scan Properties

The title bar includes **(MID)** to identify that the dialog box is being accessed via the McAfee Installation Designer, and not directly through VirusScan Enterprise.

- 4 Use the options on this dialog box to configure and schedule the scan task. For information about these options, see the *VirusScan Enterprise 7.0 Product Guide*.
- 5 When finished configuring and scheduling the task, click **OK** to return to the **Add On-Demand Scan Task** dialog box.
- 6 Click **OK** to save the scan task and return to the **McAfee Installation Designer** wizard.
- 7 When finished configuring scheduled scan tasks, choose whether to add this list of tasks to the existing tasks on the destination system, or to replace the existing tasks.
- 8 When finished adding, editing and deleting tasks, click **Next** or use the navigation pane to save the configurations and continue.

Editing scheduled scan tasks

To edit a scheduled scan:

- 1 Select the desired scheduled scan task in the **Scheduled Scans** dialog box, then click **Edit**. The **Edit On-Demand Scan Task** dialog box appears.

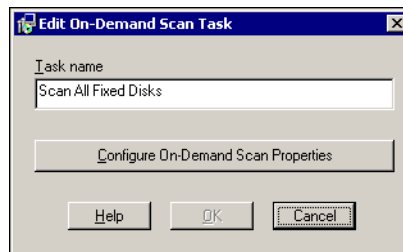


Figure 3-47. Edit On-Demand Scan Task

- 2 Edit the task name, if desired, then click **Configure On-Demand Scan Properties**. The **VirusScan On-Demand Scan Properties** dialog box appears.

NOTE

The **OK** button is not enabled until after you configure, schedule, or rename the task.

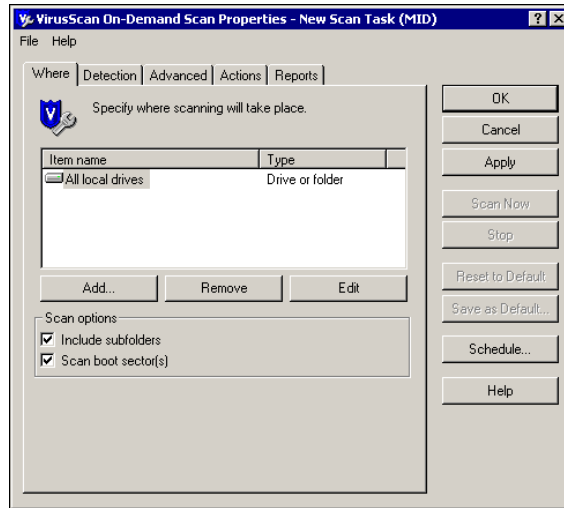


Figure 3-48. VirusScan On-Demand Scan Properties

The title bar includes **(MID)** to identify that the dialog box is being accessed via the Installation Designer, and not directly through VirusScan Enterprise.

- 3 Use the options on this dialog box to configure and schedule the scan task. For information about these options, see the *VirusScan Enterprise 7.0 Product Guide*.
- 4 When finished configuring and scheduling the task, click **OK** to return to the **Edit Scheduled Scan Task** dialog box.
- 5 Click **OK** to save the scan task and return to the Installation Designer wizard.
- 6 When finished configuring scheduled scan tasks, choose whether to add this list of tasks to the existing tasks on the destination system, or to replace the existing tasks.
- 7 When finished adding, editing, and deleting tasks, click **Next** or use the navigation pane to save the configurations and continue.

Deleting scheduled scan tasks

To delete a scheduled scan:

- 1 Select the desired scheduled scan task in the **Scheduled Scans** dialog box, then click **Delete**.
- 2 Click **Yes** when prompted to verify that you want to delete the task.
- 3 When finished configuring the scheduled scan tasks, choose whether to add this list of tasks to the existing tasks on the destination system, or to replace the existing tasks.
- 4 When finished adding, editing, and deleting tasks, click **Next** or use the navigation pane to save the configurations and continue.

Configuring the AutoUpdate Schedule

Configure these options to set and specify updates and mirror tasks to run from the destination computers once the package is installed.

From the **AutoUpdate Schedule** dialog box, you can:

- Add a new update or mirror task.
- Edit existing update or mirror tasks.
- Delete existing update or mirror tasks.

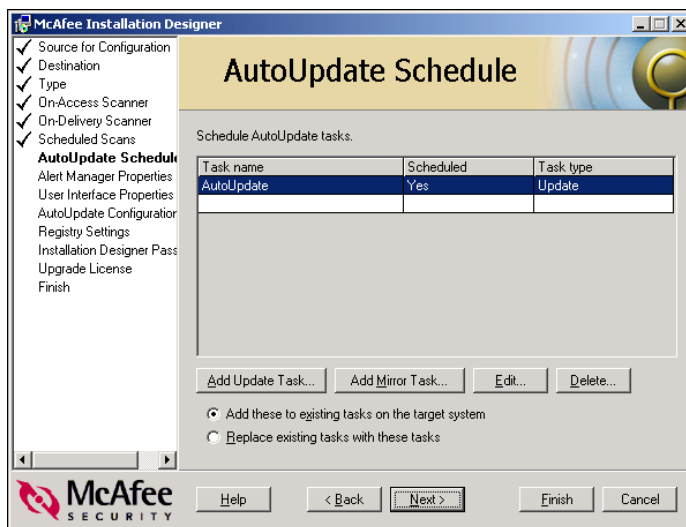


Figure 3-49. AutoUpdate Schedule

Adding an update task

To add an update task:

- 1 Click **Add**. The **Add AutoUpdate Task** dialog box appears.
- 2 Name the task in the **Task name** box.

NOTE

The **OK** button is not enabled until after you configure and schedule the update task.

- 3 Click **Configure AutoUpdate Properties**. The **VirusScan AutoUpdate Properties** dialog box appears.

The title bar includes **(MID)** to identify that the dialog box is being accessed via the McAfee Installation Designer, and not directly through VirusScan Enterprise.

- 4 Use the options on this dialog box to configure and schedule the scan task. For information about these options, see the *VirusScan Enterprise 7.0 Product Guide*.
- 5 When finished configuring and scheduling the task, click **OK** to return to the **Add AutoUpdate Task** dialog box.
- 6 Click **OK** to save the update task and return to the **McAfee Installation Designer** wizard.
- 7 When you complete configuring update tasks, choose whether to add this list of tasks to the existing tasks on the destination computer, or to replace the existing tasks.
- 8 When you complete adding, editing, and deleting tasks, click **Next** or use the left-hand navigation pane to save the configurations and continue.

Editing an update task

To edit an update task:

- 1 Select the desired update task in the **AutoUpdate Schedule** dialog box, then click **Edit**. The **Edit AutoUpdate Task** dialog box appears.

NOTE

The **OK** button is not enabled until after you configure and schedule the scan task, or rename the task.

- 2 Edit the task name, if desired, then click **Configure AutoUpdate Properties**. The **VirusScan AutoUpdate Properties** dialog box appears.

The title bar includes **(MID)** to identify that the dialog box is being accessed via the McAfee Installation Designer, and not directly through VirusScan Enterprise.

- 3 Use these options to configure and schedule the scan task. For information about these options, see the *VirusScan Enterprise 7.0 Product Guide*.
- 4 When finished configuring and scheduling the task, click **OK** to return to the **Edit AutoUpdate Task** dialog box.
- 5 Click **OK** to save the update task and return to the Installation Designer wizard.
- 6 When finished configuring update tasks, choose whether to add the this list of tasks to the existing tasks on the destination computer, or to replace the existing tasks.
- 7 When you complete adding, editing, and deleting tasks, click **Next** or use the navigation pane to save the configurations and continue.

Deleting update tasks

To delete an update task:

- 1 Select the desired update task in the **AutoUpdate** dialog box, then click **Delete**.
- 2 Click **Yes** when prompted to verify that you want to delete the task.
- 3 When finished configuring the update tasks, choose whether to add the this list of tasks to the existing tasks on the destination system, or to replace the existing tasks.
- 4 When finished adding, editing, and deleting tasks, click **Next** or use the navigation pane to save the configurations and continue.

Adding a mirror task

To add a mirror task:

- 1 Click **Add Mirror Task**. The **Add Mirror Task** dialog box appears.
- 2 Name the task in the **Task name** box.

NOTE

The **OK** button is not enabled until after you configure and schedule the mirror task.

- 3 Click **Configure Mirror Properties**. The **VirusScan AutoUpdate Properties** dialog box appears.

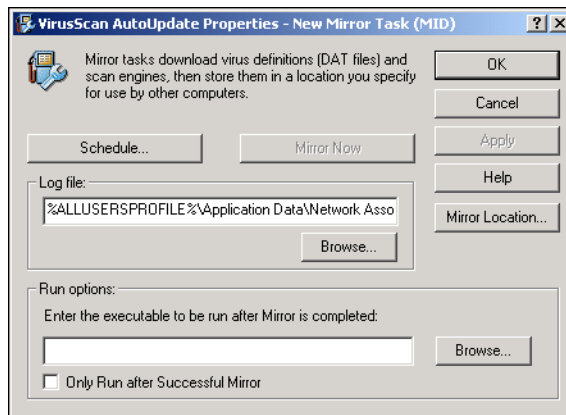


Figure 3-50. VirusScan AutoUpdate Properties

The title bar includes **(MID)** to identify that the dialog box is being accessed via the McAfee Installation Designer, and not directly through VirusScan Enterprise.

- 4 Use the options on this dialog box to configure and schedule the mirror task. For information about these options, see the *VirusScan Enterprise 7.0 Product Guide*.
- 5 When finished configuring and scheduling the task, click **OK** to return to the **Add Mirror Task** dialog box.
- 6 Click **OK** to save the update task and return to the Installation Designer wizard.
- 7 When you complete configuring update tasks, choose whether to add this list of tasks to the existing tasks on the destination system, or to replace the existing tasks.
- 8 When you complete adding, editing, and deleting tasks, click **Next** or use the navigation pane to save the configurations and continue.

Editing a mirror task

To edit a mirror task:

- 1 Select the desired update task in the **AutoUpdate Schedule** dialog box, then click **Edit**. The **Edit Mirror Task** dialog box appears.

NOTE

The **OK** button is not enabled until after you configure, schedule, or rename the mirror task.

- 2 Edit the task name, if desired, then click **Configure Mirror Properties**. The **VirusScan AutoUpdate Properties** dialog box appears.

The title bar includes **(MID)** to identify that the dialog is being accessed via the McAfee Installation Designer, and not directly through VirusScan Enterprise.

- 3 Use these options to configure and schedule the mirror task. For information about these options, see the *VirusScan Enterprise 7.0 Product Guide*.
- 4 When finished configuring and scheduling the task, click **OK** to return to the **Edit Mirror Task** dialog box.
- 5 Click **OK** to save the mirror task and return to the **McAfee Installation Designer** wizard.

- 6 When you complete configuring scheduled mirror tasks, choose whether to add this list of tasks to the existing tasks on the destination computer, or to replace the existing tasks on the destination system with this list of tasks.
- 7 When you complete adding, editing, and deleting tasks, click **Next** or use the navigation pane to save the configurations and continue.

Deleting mirror tasks

To delete a mirror task:

- 1 Select the desired mirror task in the **AutoUpdate Schedule** dialog box, then click **Delete**.
- 2 Click **Yes** when prompted to verify you want to delete the task.
- 3 When you complete configuring the tasks, choose whether to add the this list of tasks to the existing tasks on the destination computer, or to replace the existing tasks on the destination computer with this list of tasks.
- 4 When you complete adding, editing, and deleting tasks, click **Next** or use the navigation pane to save the configurations and continue.

Configuring Alert Manager properties

Configure these options to specify how VirusScan Enterprise notifies Alert Manager once the package is installed on the client computer.

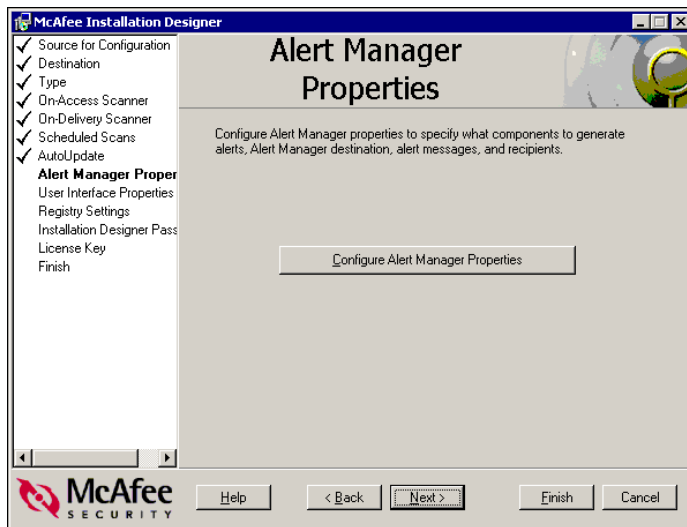


Figure 3-51. Alert Manager Properties

To configure VirusScan Enterprise alerting:

- 1 From the **Alert Manager Properties** dialog box, click **Configure Alert Manager Properties**. The **Alert Properties** dialog box from the VirusScan Console appears.

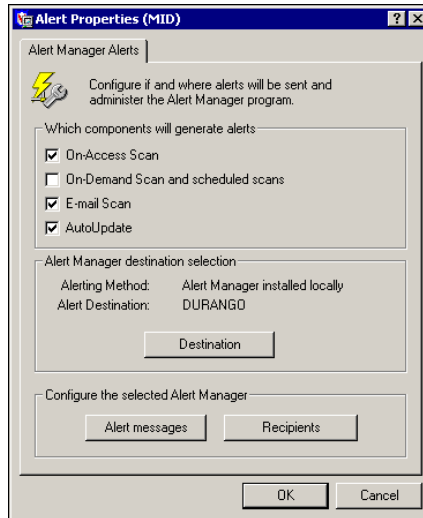


Figure 3-52. Alert Properties

The title bar includes **(MID)** to identify that the dialog box is being accessed via the McAfee Installation Designer, and not directly through VirusScan Enterprise.

- 2 Use the options on this tab to configure the alerting settings. For more information, see the *VirusScan Enterprise 7.0 Product Guide*.
- 3 Click **OK**.
- 4 Click **Next** or use the navigation pane to save the configurations and continue.

Configuring user interface properties

Configure the user interface properties to specify which parts of the VirusScan Enterprise user interface are available on the destination computers.

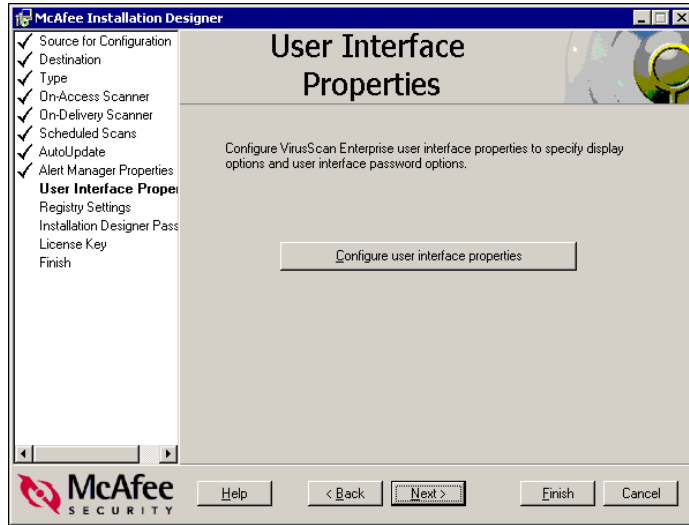


Figure 3-53. User interface Properties

To configure user interface options:

- 1 From the **User interface Properties** dialog box, click **Click to configure User interface options**. The **User Interface Options** dialog box from the VirusScan Console appears.

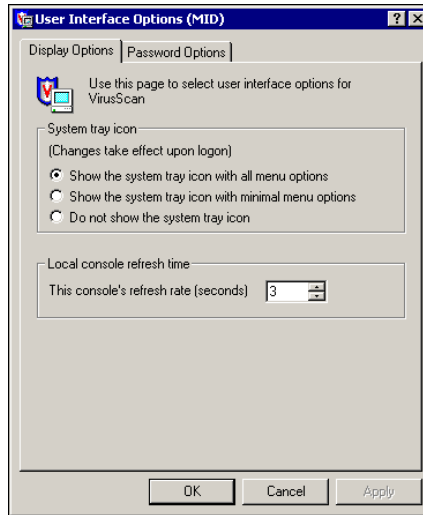


Figure 3-54. User Interface Options

The title bar includes **(MID)** to identify that the dialog box is being accessed via the McAfee Installation Designer, and not directly through VirusScan Enterprise.

- 2 Use the options of the **User Interface Options** dialog box to configure these user interface options. For more information, see the *VirusScan Enterprise 7.0 Product Guide*.
- 3 Click **OK** to return to the **McAfee Installation Designer** wizard.
- 4 Click **Next** or use the navigation pane to save the configurations and continue.

Setting registry settings

Create a single .REG file for all Windows versions or create separate .REG files for installations on Windows NT, Windows 2000, and Windows XP if you need to modify system-specific settings.

NOTE

Using this configuration dialog box requires that you understand the REGEDIT.EXE program and registry keys well enough to create, use, change and delete them or their values. Instruction in the use and management of registry keys is beyond the scope of this product guide.

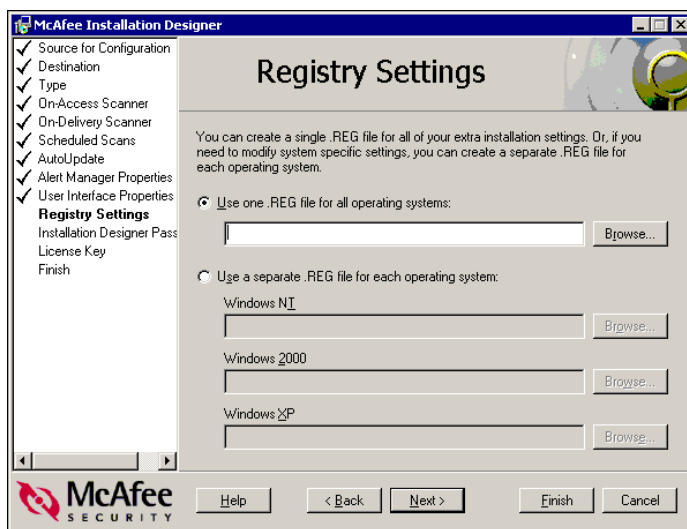


Figure 3-55. Registry Settings

See the appropriate section below, depending on whether you want to use a single .REG file for all Windows installations or separate .REG files for each version of Windows.

To use one .REG file for all Windows versions

- 1 Select **Use one .REG file for all operating systems.**
- 2 Specify an existing .REG file to be used in the installation package. Do this by either typing the full file name and path into the text box or clicking **Browse** and selecting a .REG file.
- 3 Click **Next** or use the navigation pane to save the configurations and continue.

To use separate .REG files for different Windows versions:

- 1 Select **Use a separate .REG file for each operating system**.
- 2 For each version of Windows, browse to and select the desired .REG file to be used in the installation package.
- 3 Click **Next** or use the navigation pane to save the configurations and continue.

Setting Installation Designer password

The **Installation Designer Password** dialog box allows you to use a current password, or specify and confirm a new password to prevent others with Installation Designer rights from reconfiguring the settings you are specifying.

NOTE

Using a configuration password is strongly recommended when creating a new package.

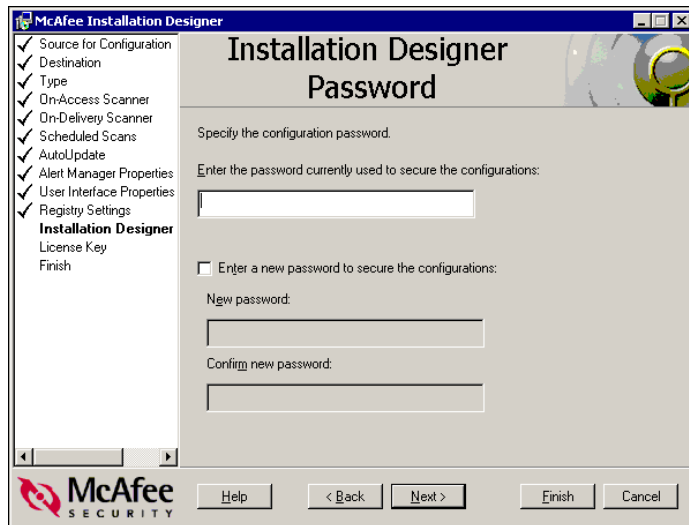


Figure 3-56. Installation Designer Password

If you are modifying a previously modified package or settings file, you may want to use the current password. To use the current password:

- 1 Deselect **Enter a new password to secure the configurations**.

- 2 Enter the password in the **Enter the password currently used to secure the configurations** box. If a password has not already been created, this box is disabled.
- 3 Click **Next** or use the navigation pane to save the configurations and continue.

To create a new password for the configurations:

- 1 Select **Enter a new password to secure the configurations**.
- 2 Enter the desired password in the **New password** and **Confirm new password** boxes.
- 3 Click **Next** or use the navigation pane to save the configurations and continue.

Upgrading the license

Select **Upgrade an evaluation version of VirusScan Enterprise to a registered version** if you are modifying an evaluation version of the software and you wish to upgrade to a licensed version.

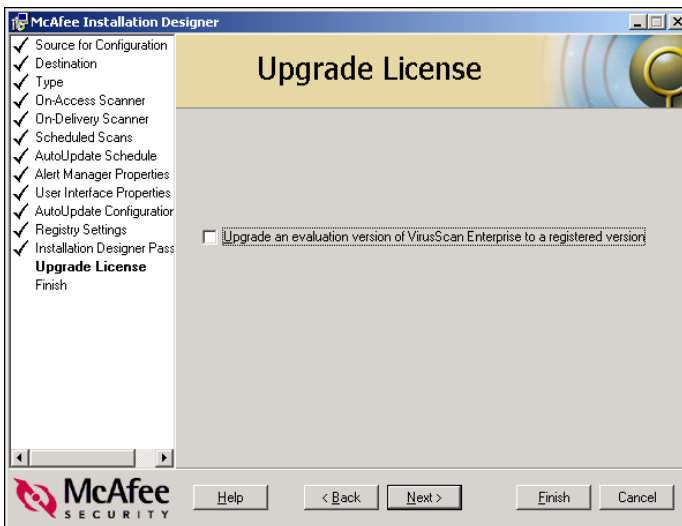


Figure 3-57. Upgrade License

NOTE

Once the settings file is deployed, the **About** dialog box displays **Licensed**.

Reviewing and saving your installation configuration

The final **Finish** dialog box lists all the configurations for the current package. Review them to make sure they are correct. To change any of the configurations, use the navigation pane to return to the appropriate dialog box, and edit those features.

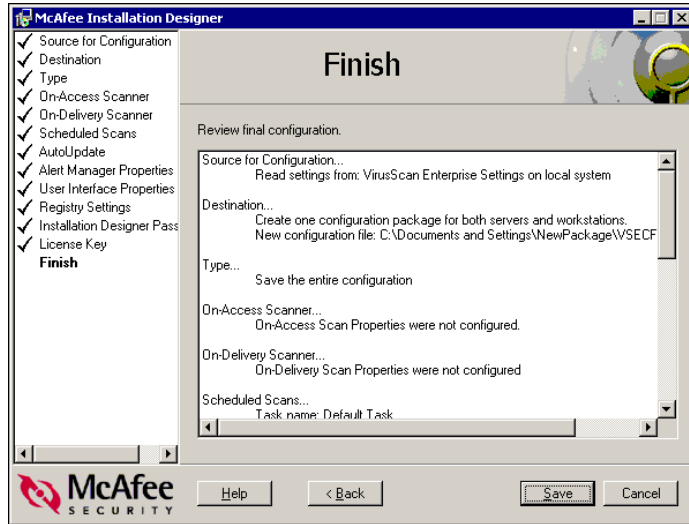


Figure 3-58. Finish

Click **Save** to save the package when the configurations are to your liking. The Installation Designer saves the package as vse700.msi file in the destination folder that you specified. (See [Setting destination options on page 70.](#))

What next?

- To create an additional customized installation package, start over with the instructions on [page 23](#).
- To prepare the customized VirusScan Enterprise package for deployment, see [The Completed Installation Package and Settings File on page 95](#).

The Completed Installation Package and Settings File

4

If you modified an entire installation package, it is located in the destination folder that you specified on the **Source and Destination** dialog box of the Installation Designer wizard.

If you created or modified a settings (.CAB) file, the file is located in the destination folder you specified in the **Destination** dialog box of the **McAfee Installation Designer** wizard. You must copy the file to the **MID** folder of the **VirusScan Enterprise** folder on each destination computer.

The completed installation package

Deploy the custom VirusScan Enterprise software installation package as you would the original package. For instructions on installing VirusScan Enterprise, see the *VirusScan Enterprise Installation Guide*.

Packages created with McAfee Installation Designer are deployable across networks by several tools and methods. (For instructions, see the product documentation for the tool you use.) These include:

- McAfee ePolicy Orchestrator
- IBM Tivoli
- Novadigm Radia
- Novell ZENworks
- Microsoft Systems Management Server
- Command line

NOTE

When setting up the installation of the new custom VirusScan Enterprise package, always use the SETUP.EXE program to launch installation, because the VirusScan Enterprise installer has custom actions that require the use of SETUP.EXE.

The completed settings file

If you chose to create only a new settings (.CAB) file, you must copy the file to the desired location.

The file names (depending on the type of settings file you created) are:

VSECFG.CAB — For both servers and workstations.

VSECFG_S.CAB — For servers only.

VSECFG_W.CAB — For workstations only.

Settings files created with McAfee Installation Designer are deployable across networks by several products, tools, and methods. (For instructions, see the product documentation for the tool you use.) These include:

- McAfee ePolicy Orchestrator
- McAfee AutoUpdate Architect
- IBM Tivoli
- Novadigm Radia
- Novell ZENworks
- Microsoft Systems Management Server
- Command line

While using McAfee Installation Designer, you may have some questions about the product or about some of the error messages that appear.

Frequently asked questions (FAQ)

Can the Installation Designer import security settings?

Yes. The Installation Designer can also create a smaller package if incremental changes only are occurring. However, it won't override the policy enforcement of ePolicy Orchestrator.

Can the Installation Designer support engine, DAT file, and service pack upgrades to the product?

Yes. These additions or changes can be added either before or after the initial deployment. However, post-installation deployment of DAT files, engine files, and service packs is not supported by McAfee Installation Designer.

Can Installation Designer bundle service packs without doubling files to deploy?

Yes, because the product uses Microsoft Patch technology.

Can the Installation Designer specify a repository site list (SITELIST.XML) for ePolicy Orchestrator?

Although you cannot create a repository site list with McAfee Installation Designer, you can select and include in the installation package a SITELIST.XML file created with McAfee AutoUpdate Architect.

If so, is it modifiable once it's deployed?

Yes. Modify the settings (.CAB) file of the original installation package with McAfee Installation Designer, and deploy the .CAB file to the desired destination computers.

Error Messages

Configuring AutoUpdate failed. Please make sure that VirusScan Enterprise is installed properly.

Try to run and configure VirusScan Enterprise on the computer where you are using McAfee Installation Designer. If there are problems, re-install VirusScan Enterprise and try to configure the installation package again with McAfee Installation Designer.

Configuring Scheduled Scan task <task name> failed. Please make sure that VirusScan Enterprise is installed properly.

Try to run and configure VirusScan Enterprise on the computer where you are using McAfee Installation Designer. If there are problems, re-install VirusScan Enterprise and try to configure the installation package again with McAfee Installation Designer.

Configuring the Alert Manager Properties failed. Please make sure that VirusScan Enterprise is installed properly.

Try to run and configure VirusScan Enterprise on the computer where you are using McAfee Installation Designer. If there are problems, re-install VirusScan Enterprise and try to configure the installation package again with McAfee Installation Designer.

The Alert Manager Server installation file <file name> could not be opened. Please verify that you have provided a valid installation file.

You either selected an incorrect folder, or the .MSI file has been corrupted. Try again, and ensure the AMG.MSI file is in the selected folder.

<File name> does not appear to be a valid Alert Manager Server installation file. Please verify you have provided a valid installation file.

You either selected an incorrect folder, or the .MSI file has been corrupted. Try again, and ensure the AMG.MSI file is in the selected folder.

Could not copy the Alert Manager file <file name>. You may configure Alert Manager Server installation options on the Alert Manager Installation page.

The Installation Designer could not find the Alert Manager file in the source folder. The file may not have been copied when the VirusScan Enterprise files were copied into the source folder. Make sure you select the appropriate folder on the **Alert Manager Installation** dialog box.

The Alert Manager Server installation file <file name> could not be opened. You may configure Alert Manager Server installation options on the Alert Manager Installation page.

The Installation Designer could not find the Alert Manager file in the source folder. The file may not have been copied when the VirusScan Enterprise files were copied into the source folder. Make sure you select the appropriate folder on the **Alert Manager Installation** dialog box.

Could not copy the Siteinfo file <file name>.

Make sure you have enough disk space available.

Could not copy the AutoUpdate configuration files.

Make sure you have enough disk space available.

Could not read DAT version from the PKGDESC.INI file.

Make sure you selected the appropriate file.

Could not read DAT date from the PKGDESC.INI file.

Make sure you selected the appropriate file.

Could not create a temporary folder for extracting DAT .ZIP file.

Make sure you have enough disk space available.

Could not decompress .ZIP file.

Make sure you have enough disk space available.

Could not delete the folder where extracted engine files are stored temporarily.

Other programs may be using the folder, or the folder may be open.

Could not create a temporary folder for extracted engine .ZIP file.

Make sure you have enough disk space available.

LICENSE.DAT, MSCAN32.DLL, or MESSAGES.DAT files missing from the engine .ZIP file.

You must download the latest engine .ZIP file from the Network Associates web site.

You may only run the Installation Designer with IE4 or above. The program will now exit.

Go to the Microsoft download web site and download the most current version of Microsoft Internet Explorer.

Could not decrypt configuration file.

The selected configuration settings (.CAB) file may have been corrupted. Select a different settings file.

Invalid configuration file.

The selected configuration settings (.CAB) file may have been corrupted. Select a different settings file.

The configuration file is corrupted.

The selected configuration settings (.CAB) file may have been corrupted. Select a different settings file.

Configuring the On-Access-Scan Properties failed. Please make sure that VirusScan Enterprise is installed properly.

Try to run and configure VirusScan Enterprise on the computer where you are using McAfee Installation Designer. If there are problems, re-install VirusScan Enterprise and try to configure the installation package again with McAfee Installation Designer.

InstallFinalize action is missing. The installation package may be corrupted. Please specify another source.

You must provide a different installation package as a source for the Installation Designer.

Could not commit the temporary .msi file <file name><error number>. Installation Designer cannot continue.

The .MSI file may be corrupted in either the source package or the new package. Begin with a different .MSI file.

Could not rename the customized .MSI file from <old file name> to <new file name>.

McAfee Installation Designer could not copy the .MSI file to the destination folder. Make sure there is enough available space on the drive where the destination folder is located.

Could not rename the customized SETUP.INI file from <old file name> to <new file name>.

McAfee Installation Designer could not copy the .MSI file to the destination folder. Make sure there is enough available space on the drive where the destination folder is located.

Could not copy source file <file name>.

McAfee Installation Designer could not copy the .MSI file to the destination folder. Make sure there is enough available space on the drive where the destination folder is located.

Could not copy settings file. VirusScan Enterprise application settings cannot be added to the package.

Recreate the installation package with McAfee Installation Designer.

Configuring user interface properties failed. Please make sure that VirusScan Enterprise is installed.

Try to run and configure VirusScan Enterprise on the computer where you are using McAfee Installation Designer. If there are problems, re-install VirusScan Enterprise and try to configure the installation package again with McAfee Installation Designer.

Could not create PKGCATALOG.XML file, template file may be corrupted. You will be unable to add this installation package to the ePolicy Orchestrator site manager.

Make sure Microsoft Internet Explorer 4.01 or later is installed.

Could not load PKGCATALOG.XML file, template file may be corrupted. You will be unable to add this installation package to the ePolicy Orchestrator site manager.

Make sure McAfee Installation Designer is installed correctly and create a new installation package.

Could not copy INSTALL.PKG template file. You will be unable to add this installation package to the ePolicy Orchestrator repository.

Check to see you have enough disk space available.

Internal Error 2356 Cabs.w1.cab

This error occurred because you attempted to install VirusScan Enterprise from an Installation Designer modified package to a destination computer that already has VirusScan Enterprise installed.

When deploying to target computers that are already running VirusScan Enterprise, Network Associates recommends deploying a settings file rather than an entire installation package.

However, if it is necessary to deploy an entire installation package to computers already running VirusScan Enterprise, and you don't have a method in place in your environment for uninstalling software, follow these steps:

- 1 Open the UNINST.INI file in the new modified installation package.
- 2 Locate the section, "Uninstall steps for VSE 7.0."
- 3 Change the flag **bSkipProduct=1** to **bSkipProduct=0**.
- 4 Close the file.

This change uninstalls all versions of VirusScan Enterprise and competitors' products during the VirusScan Enterprise installation process from a modified installation package.

Index

A

Add/Remove Programs, removing the software package, 22
audience for this manual, 5
AVERT Anti-Virus Research Site, contacting, 7

B

beta program, contacting, 7

C

contacting McAfee
 CONTACT file, 6
 list of resources, 7
Control Panel, Add/Remove Programs, 22
custom software package
 creating for VirusScan, 23
 deploying, 95
customer service, contacting, 7

D

DAT file updates, web site, 7
distributing custom software package, 96
download web site, 7

G

generate settings file
 defined, 24
getting more information, 6

H

HELP application, 6

I

installation, ?? to 21, ?? to 21
 NetShield program, 17
Installation Designer
 defined, 9

installing, 19
using with VirusScan, 23

K

KnowledgeCenter, 7

M

modifying an existing package
 defined, 24
.MSI file
 defined, 9

N

NetShield
 distributing the custom software package, 95
 installation, 17
 Setup, 17
new features, 11

P

preparing the custom software package to
 distribute, 95
product training, contacting, 7

R

README file, 6
remove current Setup, 22
removing the software package, 22

S

Setup, for NetShield program, 17
system requirements
 VirusScan Enterprise hardware
 requirements, 18

T

technical support, contacting, 7
training web site, 7

U

upgrade web site, 7

V

VirusScan

 distributing the custom software package, 95

VirusScan Enterprise

 hardware requirements for, 18

 system requirements for, 18

Z

.ZIP file, extracting, 19